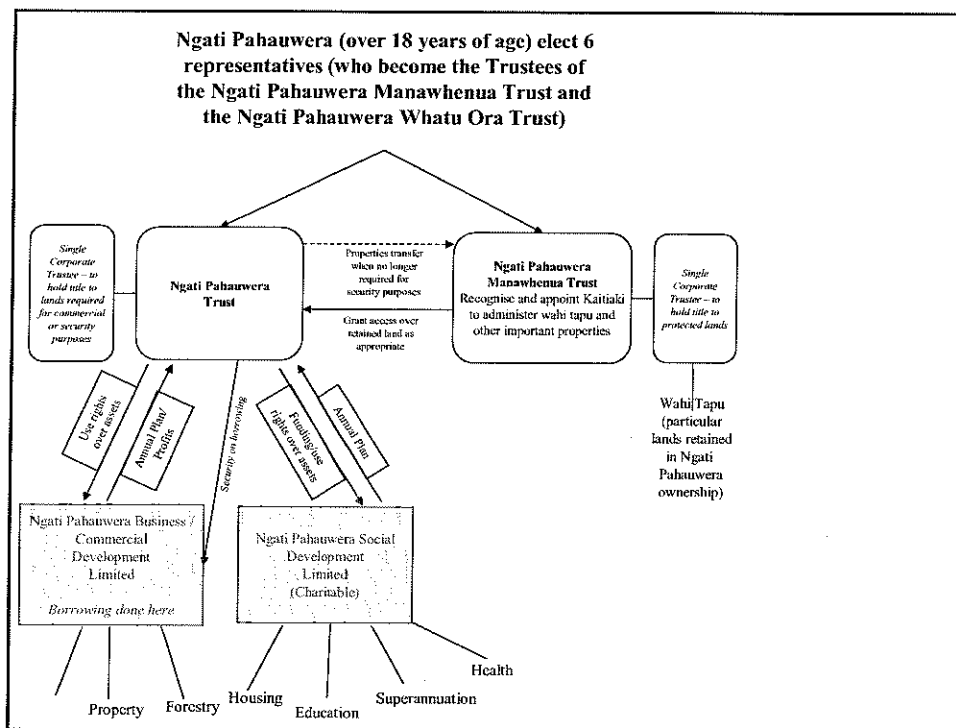


Building a Voice for Ngati Pahauwera Initial Consultation Feedback

Napier/Mohaka/Gisborne/Palmerston
North/Wellington/Christchurch/Hamilton/
Auckland
November/December 2007

LG Powell/RN Smail
Powell Webber & Associates
Solicitors
Auckland

Proposed Structure



Alternative Structure: Double Trust

- Two Trusts, with the same 6 Trustees:
 - *Ngati Pahauwera Trust*
 - As described in Discussion Document
 - Holds land required for commercial purposes
 - Together with two subsidiary companies (making the Ngati Pahauwera Development Group) responsible for commercial and social development of Ngati Pahauwera.
 - *Ngati Pahauwera Manawhenua Trust*
 - Holds culturally important land to ensure never again at risk of alienation from Ngati Pahauwera, regardless of the outcome of any commercial ventures undertaken by the iwi.
- Double Trust provides added protection of cultural lands while retaining the trust structure.
- Structure has also been used by other iwi

Representation

Appointment of Trustees

- Two year appointments with staggered elections for half the Trustees results in annual elections which are expensive
- Alternative:
 - Four year terms
 - Remaining active s30(3 members) would do an initial 2 year term to preserve institutional memory
 - After that 3 Trustees up for re-election every 2 years