

# TE PUTORINO O PĀHAUWERA



Ngāti Pāhauwera Development Group Newsletter

September 2022 | Edition 16



## KŌRERO *from the CEO*

Nga mihi nui ki a koutou te kanohi whanau, nga hapu me nga iwi mo tenei panui, te mahara ki nga tini mate kua wheturangitia, rere atu ki te ao wairua, moe te moengaroa, te moe tawhiti.

## KEI ROTO

To Waha Dentist in Wairoa

Pāhauwera Businesses

Kakabeak hunting  
in Te Heru O Tureia

Takutai Moana

2022 has started off with haste and without forethought of the ups and downs of the past two years. Like rust Covid 19 never sleeps and will test our resilience going forward compounded only with what is happening with Russia and Ukraine. These are challenging times both domestically and internationally.



Since the last edition NPDT have continued to deliver on the various pou kohatu that reflects our annual plan. Much of this work is aligned to government contracts and some of that work is reported individually below while other work carries on.

A summary of some of that carry-on work includes:

### TAKUTAI MOANA HEARING AND DECISION:

After a lengthy hearing process in 2021 the Justice Churchman delivered his judgement which can be seen at the following link:

**Takutai Moana Decision** (<https://www.courtsofnz.govt.nz/the-courts/high-court/high-court-lists/the-most-recent-minutes-2/>)

The judgement while generally positive for NPDT, has points which are being appealed by NPDT and others.

### HAUORA:

Maree Gilbert the health connector, has moved to Auckland and Michelle Thompson filled her role until June 2022 when the HBDHB connector contract ended. Michelle will endeavour to support some of the work Maree had started while supporting in the Covid 19 network. We wish Maree well in her move to Auckland and will await whether the contract will be renewed.

### LOCAL GOVERNMENT REFORM:

New RMA legislation is being consulted including three waters (Water Services Act 2021) which is controversial for council three water system management/ ownership but will also impact small drinking water suppliers like marae and the Raupunga water supply system. A combined council initiative to assess these supplies is under way to support their ability to meet the drinking water standards.

Other local government reform includes the following:

- Natural and Built Environments Act (NBA), as the main replacement for the RMA, to protect and restore the environment while better enabling development
- Strategic Planning Act (SPA), requiring the development of long-term regional spatial strategies to help coordinate and integrate decisions made under relevant legislation; and
- Climate Adaptation Act (CAA), to address complex issues associated with managed retreat.

### MSD:

Tania Huata continues with budget advisory service via Larissa and Jessica but also has a network within MSD to support whanau if they want. Peter Eden also provides support for those seeking employment assistance.

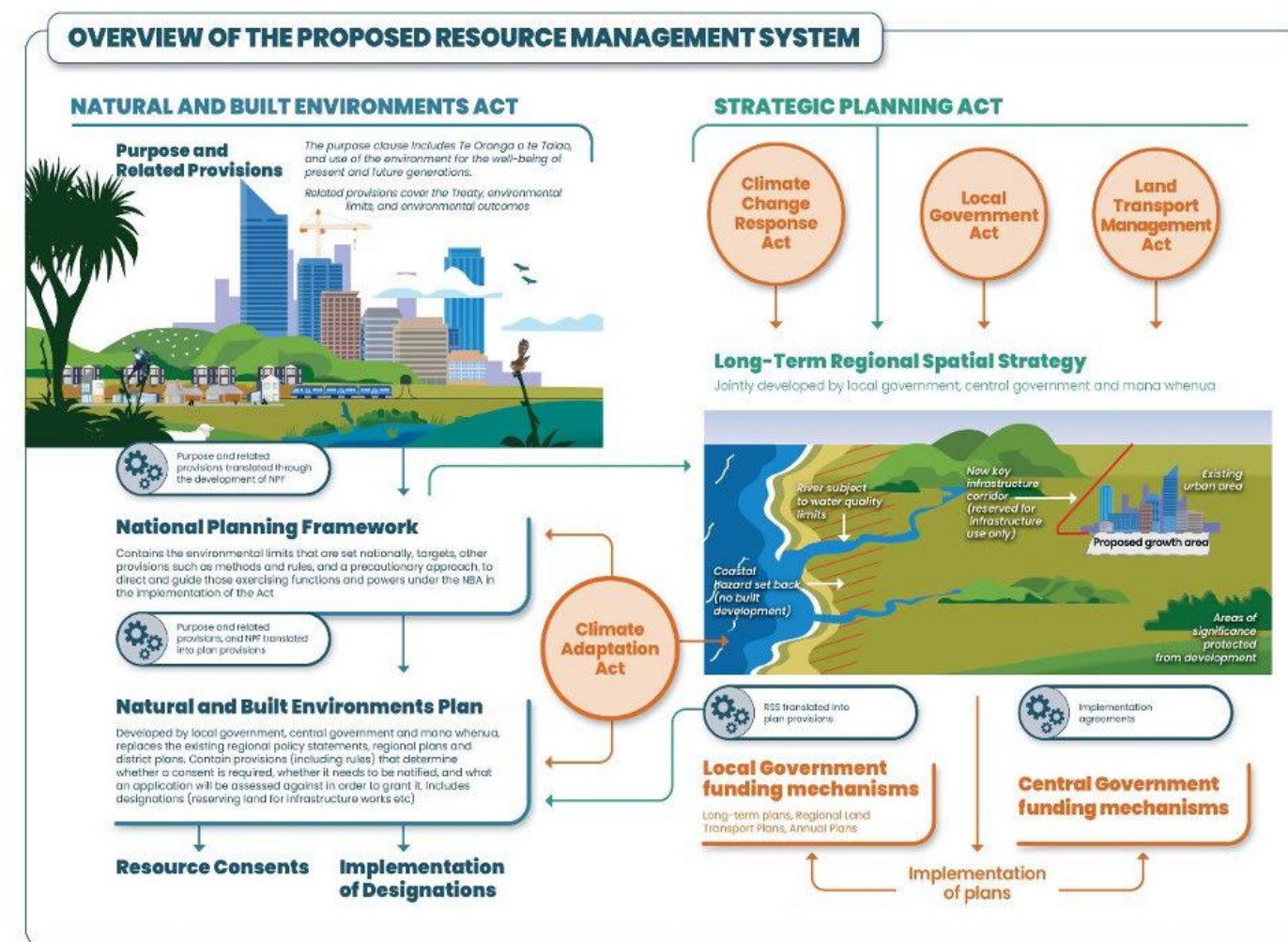
### NPCDL ORCHARD:

NPDT recently purchased the Mohaka Olive Grove for future horticultural development.

Ngāti Kahungunu Iwi Incorporated (NKII): eventually NPDT inter related member network needs to be integrated with the likes of NKII and other settlement groups to reflect our shared whakapapa. Those discussions are a topic for the new NKII Chairman elections because tribal development must continue to evolve amongst the iwi entities.

### COVID 19:

The health system is trying to cope with the changing circumstances of Covid 19 which can be very frustrating. Good communication is the most important aspect delivering the



right information at the right time. Support for whanau is available from the various taiwhenua who deliver under the auspices of NKII who had the relationship with HBDHB. NPDT can help direct and/ or support whanau as required just contact the office.

Te Arawhiti have also provided funding for isolation kits which were delivered during March 2022 to complement the existing support packs.

NPDT also initiated a project with Ministry of Health to align member details with vaccination rates to help shape health interventions where there is an identified need. High level numbers show an 83% rate of vaccination with about 7 % of members unvaccinated. There were some gaps in the information match up but high

vaccination rate is good indicator that members are protected. NPDT will need to increase data integrity of its own data base while looking to determine other opportunities for demographic profiling.

*Keep yourselves safe in this environment and if there are any suggestions on how things could be done better send an email to [admin@npdt.co.nz](mailto:admin@npdt.co.nz).*

Kia mau  
Robin Hape



KŌRERO  
from the Chairman

*Tama Tu tama ora.*  
Active people survive.

*Tama noho tama mate.*  
If you fail to act you will not survive.

This was the catch cry of Nga Tamatoa in the 1970s to encourage te Iwi Maori to stand up to the racism that disadvantaged Maori in all aspects of life.

The original founding members continue to work to advance Tino raNgātiratanga and Mana motuhake and this is consistent with the goals of the Ngāti Pāhauwera Development Trust. Much has progressed since earlier times but there is still institutional and personal racism that impacts on our quality of life.

The Iwi Chairs Forum has recently formed a committee on which I sit to work with government on the elimination of racism.

In the background much is made of the Tiriti of Waitangi to manage the tensions between Maori and the Government, but Government to date has refused to refute the “Doctrine of Discovery” which all the Colonial countries use as their god given right to override the interests of indigenous people around the world. A good example of that is when the land came up in the Napier earthquake the land was claimed by the Government as an act of God.

One of the roles of the Pou Tikanga of the Iwi Chairs Forum of which I am also a member is to hold the Crown to account regarding the United Nations Declaration of Human rights (UNDRIP) which declares colonising governments need the “full and informed consent of indigenous peoples”. The New Zealand Government were signatories to UNDRIP.

Much of the mahi of the Ngāti Pāhauwera Development Trust involves working with Government Agencies to ensure they deliver the quality of service we require. As rate payers and Tax payers we should not be spending all our money on services they should provide. Some Agencies do better than others in assisting our whanau.

This is all of more important now with the impacts of Covid and international turmoil and its effect on the cost of living. It’s no surprise that everything from milk to rent is significantly more expensive right now, compared to a year ago. In the year to December 2021, the cost of living, as measured by the Consumer Price Index went up by 5.9 percent. The issue is amplified by the fact that most people are not experiencing any real growth in wages. Wages increased by just 2.6 percent, on average, in the year to December 2021.



*The three items that make up the lion’s share of our expenses every week are rent (or mortgage repayments), food, and transport (public transport and driving). These expenses are largely unavoidable and all three have been increasing at a record pace over the past few months.*

Whilst the Ngāti Pāhauwera Development Trust helps where it can we are constrained by our resources. Our distribution revenue comes from our Forestry Investments. Forestry has been the mainstay of the Trusts income. We can only spend 3% of our earnings so that we don’t eat into the monies we need for future generations. The Ngāti Pāhauwera Manaaki Committee uses these funds to help our members in the form of scholarships, Marae support, and whanau support.

*‘Ma te Huruhuru te manu ka rere’.*  
*Just as a bird needs feathers to fly so too does the trust needs cash to help.*

The move of the Ngāti Pāhauwera Development Trust into Horticulture is an exciting development that will seriously increase our cash flow but we are constrained by cash to invest.

The Ngāti Pāhauwera Commercial Development Trust has the opportunity to earn 20 million dollars plus over the next ten years from planting half of Pihanui Station in Pine trees. This is the equivalent of the money the Ngāti Pāhauwera Development Trust received in quantum in the Treaty Settlement.



Some Trustees who want Pihanui left as a farm despite the very low returns from this steep hill country farm. There are also concerns regarding potential impacts on water quality. The NPDT has high environmental standards and should we proceed, plans will include measures to improve both water quality and ecological health of the Waihua and Waiau rivers by planting 2,000ha of natives with appropriate fencing.

Tama tu, Tama ora.

COMPARISON OF OPTIONS:

	Planting 50% of Pihanui in Pine Trees	Keep Farming Pihanui
JOB	40+	3
LAND	More	Same
MONEY COMING IN PER YEAR	\$2 Million	\$200,000
FOOD PRODUCTION	14 times more	Same
NATIVE PLANTINGS	200 hectares to protect waterways	Same
WATER QUALITY	Less sediment, less fertiliser, less erosion	Same
BETTER COMMUNITIES	Jobs mean better houses, brighter futures, healthier people	Same
In 20 years	\$80M; 200 jobs; more of everything	Same





To Waha Clinicians group photo

## DENTIST IN WAIROA: TO WAHA

For the people of the Wairoa district, 6 days of FREE oral health care was available.

Many Wairoa Community Partnership Groups, Maori Provider Kahungunu Executive, Iwi Leaders, local social and health care providers spearheaded the initiative, which resulted in, To Waha's free dental treatment being a reality.

The clinicians from Tairāwhiti, Hawkes Bay, Whanganui, Otago, and Hamilton, as well as our local volunteers, have been nothing short of amazing from Monday to Saturday.

There was 500+ registrations and a minimum of 300 treatments, including walk-ins that require immediate attention.

*Whanau arrive in pain and depart with their heads held high, a glint in their eyes, and a smile hidden beneath their masks is a sight to behold.*

Dentist Chris and Justin Wall who took it out for the time they were here, Doc Nic and his team, Martin and Wendy from the Bay, Annie from Tairāwhiti, and Hyrum, Terence, and Joon from Hamilton, all volunteering their time, closing their own practises to support Wairoa's To Waha event.

Wairoa whanau who were treated by the To Waha team over the course of the week have expressed their gratitude by sending messages to the team, dropping off kai, shortcake slices, cakes, and whitebait fritters as a token of their gratitude for a treatment that was desperately needed but unaffordable for most - the cost prohibiting access at every entry point.



The Pāhauwera Team

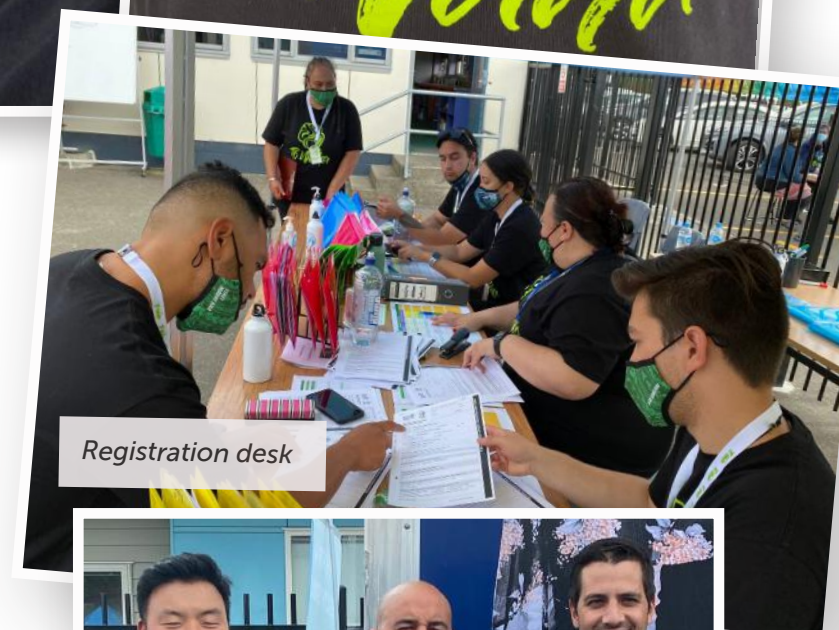
The anguish they will no longer experience, the information they will now have, and the grin they will now be willing to display.

The numbers were significant, the outcome was inspiring, and the CREW who stood up and held the line for six days straight from 7 a.m. to 9.30 p.m.

Thank you so much from this wonderful community, which has been robbed of a basic function that should be available to everyone regardless of cost or access.

*The most rewarding community endeavour in which I have had the honour of participating in.*

It has been a monumental undertaking to organise and manage a project of this scope without the equipment behind it. Kaz Paku was part of a team led by Maori Health Charissa Keenan and Ina Graham from the HBDHB. We are grateful for your knowledge and manaaki in organising, collaborating, and executing with class, and we express our gratitude.



Registration desk



Waikato Dentists Joon, Hyrum, and Terrance



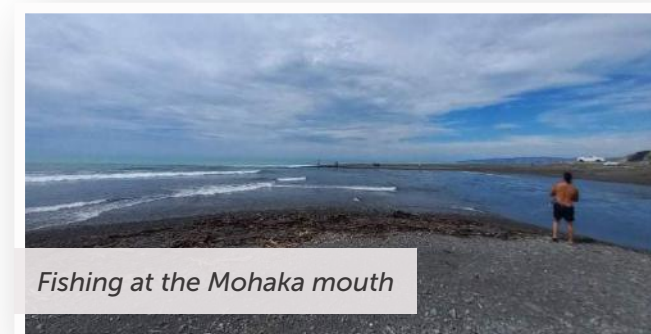
## FISHING AT THE MOUTH OF THE MIGHTY MOHAKA AWA



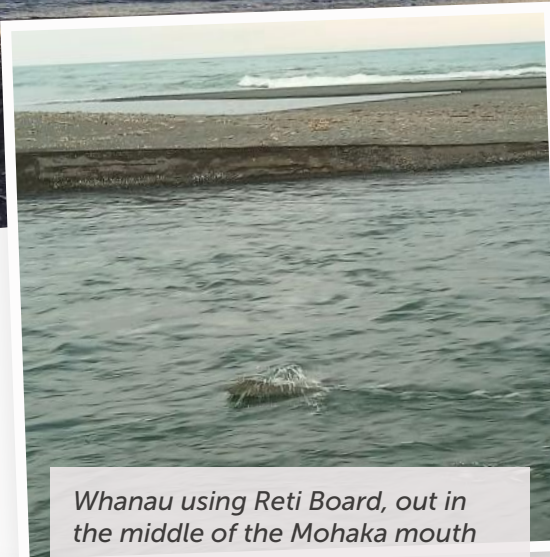
Many whanau travel near and far to take advantage of the gifts received from Tangaroa, during the holiday season and fish at the mouth of the mighty Mohaka River hoping to catch a feed of the sweet eating Mohaka Kahawai.

Whanau fish on both sides of the Mohaka River, known to locals as the Māori side and the pakeha side.

*Top image: Local Rangatahi, Moro Taurima at the mouth of the Mohaka River, as he gets ready for one of his early morning fishing expeditions.*



Fishing at the Mohaka mouth



Whanau using Reti Board, out in the middle of the Mohaka mouth



Fresh Kahawai

## PĀHAUWERA WAIATA: Taku Reti

*Kei te rere taku reti  
Kei te rere nga paua e rua  
Ko te tahi he kamuramura  
Tetahi he waitutu e*

*Kei whea re koe e kahiwai  
Kei te whanga au ki a koe  
Ko maungatea ki ahi Manawa  
Ko te ara moana ki Mohaka*

*Mehemea kaore koe  
e te haere mai  
Me korero koe ki ngaru  
Ma nga ngaru korero mai  
ki ahau  
Ka whakakingia taku peke  
ki whaia*

*Na Ramon Joe*

## PAKURATAHI ORCHARD UPDATE

We now have 32 ha of high returning apple varieties planted which also includes Envy and Rockit.

The first crop will be harvested in 2023 from the three-year old trees. Right now, the teams are focused on tying down branches and filling the trellis as fast as possible. There is a real sense of achievement at the orchard which is testament to all those who have worked hard on this project.

The pump shed and irrigation systems are all in place. This new system draws water from 130 m below ground and means we should no longer need to take water from the Pakuratahi Stream. This system delivers water precisely to where we want it and when. This is all aimed towards having the Pāhauwera Orchard in the top 5% of producing orchards in Hawkes Bay.

Orange harvest has finished and pricing was well back on previous years due to an over-supply of Californian oranges. Harvest continued until late June and then we move into the next phase of planting more of the orchard into apples.

Luke Hansen





# PROMOTING PĀHAUWERA BUSINESSES



*Mirimiri ā Wairua*  
 14 Rutherford St  
 Wairoa




*Mon - Thurs*  
 9am - 3pm  
 Text Viv @ 0275275231  
 or pm Mirimiri ā Wairua

## MIRIMIRI A WAIRUA

Vivienne McKenzie and Danielle Brown-McKenzie, both whakapapa to Ngāti Pāhauwera through their Koro Phil Tumataroa.


For all those who are needing to be re-energised re-vitalised give Mirimiri Wairua a call. A beautiful fusion of hands-on (Mirimiri, Romiromi, Kahuna & Backwalking) and energy healing (Energy centres, Star Healing, Reiki Tummo) learnt and gifted ā Wairua, merged through the intention and power of Karakia

14 Rutherford Street Wairoa,  
 New Zealand 4108  
 mirimiri.vivanddanie@gmail.com



**PADRE CONTRACTING**  
 HE PAI TE ATUA

**PADRE CONTRACTING**  
 Roothing | Drainage | Concrete  
 Track work | Sub divisions | Prep work  
 Padre contracting is based in Hawkes Bay.  
 Follow their Facebook and keep them in mind for your next project!  
 Contact Padre 0275317038  
 Padrecontracting@gmail.com



## PROMOTE YOUR PĀHAUWERA BUSINESS HERE

Contact: [admin@npdt.co.nz](mailto:admin@npdt.co.nz).

## DOTS ARTS

DOTS ARTS are made up of Addie Wainohu – A graphic Designer and resin Jewellery maker, and Hoani Pohatu – a greenstone Pounamu carver.

Together, we hand-make a variety of Maori indigenous arts from carving Pounamu (greenstone) from the South Island of New Zealand and sourcing Harakeke (flax) from our local hometown of Hastings, and designing rein earrings. We brought a laser cutter last year so we were about to laser some of our Pounamu.

I am aged 62 years old of Ngāti Pāhauwera.

I have 2 grown-up children and 8 Mokopuna. I am a retired registered nurse and midwife. Spent 8 years in Sydney and came home in 2016 so I reinvented myself back into starting a business with the arts. I come from a creative Whanau from an early age I had been taught many of the old traditional ways.

On our website blog, I am starting the video's on Harakeke making and soon Pounamu carving plus using the laser cutter machine.

[www.dotarts.co.nz](http://www.dotarts.co.nz)  
 Facebook: Dots Art Ltd





## WHENUA ASPIRATIONS SITE VISIT:

*For Sustainable Land Use and Climate Change Projects*



Ben MacKintosh farm (Waikare)



Te Kahika Whanau Farm (Raupunga)



Te Aho Whanau at Waihua Beach



Gaye Hawkins talking about blocks at Waihua



Harry Bennsion (Putere) and Alec Mackay (AgResearch)

## KAKABEAK HUNTING IN TE HERU-O-TUREIA *By Pete Shaw*

### THE BEGINNING

References to the abundance of kakabeak in this area were recorded by H. Guthrie Smith in his book detailing the ecology in the greater Tutira area: TUTIRA, The Story of a New Zealand Sheep Station (H. Guthrie Smith, 1953).

Here he states that "....On the dry cliffs survived two native brooms, *Carrichaelia odorata* and another *Vittadinia australis*, *Senecio laetus*, *Stellaria parviflora*, *Tillaea sieberiana*, *Clanthus puniceus* (kakabeak)—brilliant in its bright scarlet racemes and at one period, until eaten out by cattle, growing in great quantities on Heru-O-Tureia and much more rarely on Awa-o-Totara....."

In 1983 my brother Willie Shaw and Sarah Beadle were at Maungataniwha tasked with assessing the block as an addition to Te Urewera National Park. At the time it was owned by the Angus

Corporation, who had just completed the land-based native forest logging of the area. Willie had been working on a botanical survey of Te Urewera and had a good grasp of the ecology of the area and also an appreciation of the perilous state of kakabeak, even then. During their assessment work Willie and Sarah looked at the bluffs across the Waiau River and determined that "they look like good kakabeak habitat". They headed over for a look, climbed well up into the bluffs and then split to go separate ways along the base of the bluffs. Neither found anything but on the way back to the rendezvous point Willie glanced at a splash of red over his left shoulder and there was a plant, with just a smattering of flowers present. Willie went on to write the first Recovery Plan for kakabeak, the first such plan for a plant species nationally.

Following from this DOC had a number of aerial searches for this plant, the only one known of the whole of the Waiau catchment. It was not found, but as Willie said later, "They should have



given me a call first, as it was tucked up under canopy and not visible from the air.”

Twenty-five years later, in 2008 Willie and I were at Maungataniwha with an afternoon spare and a look for the plant on the Waiau Bluffs was agreed upon. The Waiau was well up though and so a feasible crossing up-valley was found and we headed up to the bluffs and remarkably the plant was re-found. Subsequent searching found another three plants on the bluffs and so began the involvement of the Forest Lifeorce Restoration Trust with kakabeak.

## THE HUNT MOVES TO TE HERU-O-TUREIA

In September 2010 Bruce Pope and I spotted a kakabeak across the Mohaka River. We were looking from the bottom of the Totara Bush Track on Te Hoe Station.

Two months later a wander up the river (it can be walked for a kilometre in this stretch of the Mohaka Gorge) revealed another two plants. A subsequent trip with Helen Jonas of DOC Wairoa saw these plants labelled with the unlikely names of “Pete 1”, “Pete 2” and “Pete 3”.

In December 2010 an RNZAF Iroquois helicopter was available to retrieve kakabeak material for DNA testing. Gareth Boyt, then of DOC Murupara, was keen to help and ended up 120 feet on the end of the winch rope snipping material off the Pete 3 plant. Nearby he spotted another plant, which came to be called ‘Gareth’s Plant’ a well earned moniker.

A kayak-based search down from Willow Flat to Raupunga was undertaken in October 2012. No plants were found, but 157 goats were seen! That same month two new plants, named “Helen” and “Alan” after the two dedicated DOC kakabeak identities Helen Jonas and Alan Lee, were found during a ground search. The clearing beneath these plants was at GPS coordinates E1935748 N5671909.

The next month a luxuriant plant was found at E1936511 N5671864 and it was named “Rachel’s Plant” after the FLRT Patron Rachel Hunter. Nearby was a small plant quickly christened “R2”.



**RACHEL’S PLANT, AS FOUND  
IN NOVEMBER 2012 (ABOVE)**

In January 2013 these recently located plants were visited by Brett Gilmour and Gary Kane (volunteers from PanPac), Gus Garaway (a volunteer from Whakatane) and the author.

Gary abseiled down to Helen and Alan’s plants to remove material. Both were sited above a sheer drop! Brett attempted the same with R2 but the goats had beaten us and the plant was gone.

In February 2013 Eddie Te Kahika and Malcom Lock of DOC Napier long-lined beneath Spence Putwain’s Hughs 500D helicopter to retrieve more material for DNA sampling. Alongside Pete 2 Malcom located a new plant named after him as “Lockie’s Plant”.



*Gary Kane casually  
removes material from the  
Alan’s wild plant above a  
sheer 40 metre drop.*

Shortly afterwards Alan Lee and the author paddled across the Mohaka to view Helen’s enclosure to find six plants alive there. The following month Helen Jonas and Alan Lee and the author bush-bashed in to Rachel’s Plants and collected a mass of seed for propagation. Andrew Oliver and the author cut a track off the back of Te Hoe Station down to the Mohaka Gorge this same month purely to facilitate access for kakabeak work. In October 2013 Ian Brickell and the author searched the bluffs on Te Waewae Station looking for kakabeak plants, but no plants were found. A DOC funded aerial search in October 2013 located what was at first to be one large plant, but revealed later to be two plants underneath Te Kooti’s Lookout. This was done after access permission had first been obtained to Tatarakina.

Late 2013 saw the discovery of a young plant alongside the Slope Down Road in Matais Forest by Pete and Linda Lister. In November 2015 Don McClean, then of DOC Gisborne, found the rare grass species Annemmanthele lessioana on the access track from Te Hoe Station down into the Mohaka Gorge. This same month Sean Husheer and the author conducted an aerial search for plants on the Putere Bluffs and Te Hoe Gorge from Sean’s hughs 300 helicopter. No plants were found.

In October 2019 the base of bluff where the Helen’s and Alan’s plants were located was revisited by the author and both plants were found to be dead. The Mohaka Gorge was also revisited by Helen Jonas and the author and only one plant was located.

## CONCLUSION

There has been considerable effort go into locating kakabeak within Te Heru-o-Tureia and it has been recognised as the “mecca” for kakabeak within Hawke’s Bay. However, the ever present browsing of marauding goats and the impacts of global warming, with its attendant flood events and droughts, means that numbers within Te Heru-O-Tureia have declined and will continue to do so unless urgent action is taken.

## FOREST LIFEFORCE RESTORATION TRUST

Our sincere thanks go to James and Anita Powrie of RedAxe Forestry Intelligence who are helping to drive our kākābeak recovery work.

James, Anita (pictured here) and a bad of dedicated volunteers spend hours on our property in the Maungataniwha Native Forest, planting, maintaining and nurturing the kākābeak we have growing in our predator-proof ‘exclosures’ (a protected area designed to exclude rather than enclose).

This mahi is part of a wider programme around the Hawke’s Bay region involving Troy Duncan of the Queen Elizabeth II National Trust, Marie Taylor of Plant Hawke’s Bay Ltd, Theresa Thornton of Ngāti Pāhauwera and Alan Lee of the Department of Conservation, with funding from the Pan Pac Environmental Trust and Ngāti Pāhauwera Development Trust.

The exclosures at Maungataniwha are part of a network of safe sites where ‘wild’ kakabeak are being grown for their seed. Genetically, these plants are likely to be harder and better able to survive in predator-free sites in the wild than their domestic ‘cousins’ which have, over decades, been interbred for various display features and now may have lost some of the wild diversity and ability to survive in the hills.



*Anita Powrie of Red Axe Forestry*



## TE PUTORINO O PĀHAUWERA PANUI

The Ngāti Pāhauwera Te Putorino Panui comes out quarterly.

We are wanting to touch base with you, and to ask what is it that you have going on this year, that we might be able to put into the Te Putorino O Pāhauwera Panui throughout the year.

Any good things that are happening out in our community, with our marae, schools or within the whānau or students, maybe nanny or koro celebrating a milestone, anything that you think may be a good read. Send it in.

All we will need is photo's with permission to use, and a paragraph or two of what's happening. So if you can get in touch with me that will be great.

Email – [elmaadi.teaho@npdt.co.nz](mailto:elmaadi.teaho@npdt.co.nz)

Phone – 06 8386869



## STAYING UP TO DATE

*Are your whānau's membership details with the trust up to date?*

If not, there could be a variety of reasons for this, it may be date of birth, address, phone, email address, if you have moved or married recently, if you have added to the whānau or if you have lost a loved one. If you have not received AGM details, Voting Packs, Manaaki Grants information – either you are not registered, or we do not have the correct details.

### HOW TO CHECK:

Please go to our website's NPDT Registration form [www.NgatiPahauwera.co.nz/rehitatanga/](http://www.NgatiPahauwera.co.nz/rehitatanga/)

This mahi is ongoing, we ask all registered members to update their details with us.

This information would be very much appreciated. Please email your updated form to: [admin@npdt.co.nz](mailto:admin@npdt.co.nz) or drop in to one of our offices.



## NATIONAL CENTRE FOR WOMEN'S HEALTH RESEARCH AOTEAROA

### 3 Projects Underway:

He Korowai Manaaki

Whānau Manaaki:  
Methamphetamine – A Strength Based Community Approach

He Tapu Te Whare Tangata  
(Empowering Rural Solutions)

*Three research projects are currently underway in partnership with Te Tātai Hauora o Hine – the National Centre for Women's Health Research Aotearoa.*

Originally based within the University of Otago and now within Te Herenga Waka, Victoria University, the rōpū have been working in partnership with NPDT for the last six years. Led by Professor Bev Lawton (Te Aitanga-a-Hauiti), their research aims to reduce harm and preventable death, improve health outcomes over time, affect policy and have impact for lifelong health and wellbeing for whānau.

Charlie Lambert and Matthew Bennett are Kaumātua / Hapori Research Advisors with the rōpū and have played key roles in the establishment of the partnership and the introduction of the different research projects across the rohe.



## HE KOROWAI MANAAKI

He Korowai Manaaki, which started in 2018, is a pregnancy wraparound kaupapa undertaken through Wairoa maternity and Wairoa's general practices. Through He Korowai Manaaki, hapū māmā were able to access augmented, additional care through these providers with wider wraparound support. This involved additional free appointments with general practice during pregnancy and an appointment 6 weeks after pēpi was born for māmā.

The aim was to provide wider clinical and social wraparound support for hapū māmā, and seeks to improve infant vaccinations in the first 6 months and access to care (including health screening, contraception) to improve outcomes for māmā and pēpi. The clinical outcomes will be reported later this year.

This kaupapa also included oral health packages of care. Through the project \$45,000 of oral healthcare was provided to meet the needs of 133 hapū māmā and / or their partners who accepted referral to the dental practice though the study. However unmet plans of care totalled a further \$98,000. The research rōpū are interested to work alongside local providers, the council and DHB to finding sustainable solutions and a locally accessible free service for our whānau to become orally fit.

Through all the different wraparound strands of this kaupapa, the Centre looks to provide evidence-based solutions and provide opportunities with agency leads and policy makers to enable system-wide changes for the benefit of our whānau. Work is ongoing to work towards how best to provide on-site drivers licensing testing. Both good clinical care and wraparound support is crucial for good outcomes for māmā and pēpi, leading to timely birth, and lifelong health and wellbeing.

## WHĀNAU MANAAKI: METHAMPHETAMINE – A STRENGTH BASED COMMUNITY APPROACH

Also known as Whakapounamu Mana Wāhine, it is a Kaupapa Māori qualitative research study that was developed from the early work of

He Korowai Manaaki. This research (underway) aims to contribute and explore the impact of methamphetamine on the health and wellbeing of Māori hapū māmā, their pēpi and whānau, map existing services and co-design interventions to reduce the harm of methamphetamine. To date this research has assisted local community researchers and networks to work alongside whānau and listen to their kōrero. A second workshop will be held in March to share the work to inform possible solutions.

## HE TAPU TE WHARE TANGATA (EMPOWERING RURAL SOLUTIONS)

This is a research project currently underway through Queen Street Practice and Ngāti Porou Hauora delivering the gold standard test to screen for cervical cancer. In Aotearoa New Zealand, 160 women develop cervical cancer each year – and about 50 die from it. However, cervical cancer is now preventable. The gold standard test, which looks for the Human Papillomavirus (HPV), is 60-70% more effective at preventing cervical cancer than cervical smears because it detects the virus that causes cancer before it progresses. Self-tests are also more acceptable, empowering women to take control of their own health. Until the government implements the country's new screening programme, the Centre's research programmes are one of the only ways' women can access this better test.

The partnership between the Centre and NPDT continues to inform future projects including a large HPV screening implementation study in Te Tai Tokerau and another orientated around hapū māmā in partnership with Ngāti Toa RaNgātira and Capital and Coast District Health Board. The leadership and guidance from Matthew and Charlie have been pivotal to the overall programme of work, actively involved in initiation and participation in the research. Focused on wāhine, the research projects seek to bring about the changes necessary to make our health system more effective and equitable.



## J4N: Jobs 4 Nature Crew

*Last year NPDT received funding from the Department of Conservation Jobs for Nature fund.*

This money enabled us to employ Pāhauwera people to work in environmental restoration for three years from 2021 - 2024. Since we have started, we have planted natives at Tawhirirangi, Lake Rotongaio and Lake Poukawa. The team has also been busy cutting and maintaining tracks on Pāhauwera whenua such as Te Heru o Tureia, undertaken weed control including spraying gorse on Tawhirirangi, and fencing to keep our ngahere and awa safe from pests.



J4N team members riparian planting at Lake Rotongaio

Tracks being cut and maintained at Te Heru o Tureia

This quarter we look forward to continuing this work and hope to navigate the challenges of COVID19 so that we can invite whānau to join us on planting days and iwi hīkoi. Please keep an eye on the Ngāti Pāhauwera Development Trust Facebook page for updates.

NPDT is also expecting to receive more government funding soon to employ Pāhauwera people in freshwater management. There will be more on that in the next edition.

**If you or someone you know would be interested in participating and would like to know more, please contact Kathryn Gale at [kathryn.gale@npdt.co.nz](mailto:kathryn.gale@npdt.co.nz) or call the Wairoa office on 06 838 6869.**





*Ko Tirotiro Whetū te maunga,  
Ko Waihua te Awa,  
Ko Ngāti Kurahikakawa te hapū.*

## WAIHUA PUNA HIKOI ON PIHANUI FARM

*Trustees and whanau recently came together under the guidance of Charlie Lambert and Kuki Green to visit one of the tributary puna of the Waihua river.*

This hiikoi was about connecting trustees and whanau to important landmarks within the Ngāti Kurahikakawa boundary.

The hiikoi started at the Waihua Marae where we had a debrief and karakia. We then journeyed on to the Ngāti Pāhauwera farm 'Pihanui' via Cricklewood. After arrival we were escorted by

farm manager Jono Neilson around Pihanui farm where Charlie and Kuki pointed out Pa tāwhito, mahinga kai and other areas of interest where the tipuna resided.

The hiikoi was a reminder that we need to be active kaitiaki. With the Waihua river coming under the Mohaka River Plan Change we need to bring more attention to issues that are affecting the mauri of the Waihua river. Our river connects us with the whenua and also with the many hapu that share the same water ways.

Visiting and feeling the mauri of the whenua and hearing the history of the area are ways we can bring our hapu of Ngāti Kurahikakawa together. The whenua needs to be walked to be experienced with all of our senses. Descendants will gain connection and then have an understanding of the collective kaitiaki responsibilities.

One of the participants of the hiikoi Lucky Hawkins shares with us the experience "Many feelings and emotions were evoked on the hiikoi whenua. I had moments of sadness remembering my father and brothers and others who we buried in our Waihua urupa. Happiness remembering something my father said many years ago, which was to try and bring our whanau back to Waihua.

*I was amazed at the size, efforts and mahi Ngāti Pāhauwera are carrying out to improve the whenua / awa for generations to come.*

*We all come from Papatūānuku, and to see firsthand where our awa stemmed from, made me think, how humble a spring, but mighty a river.*

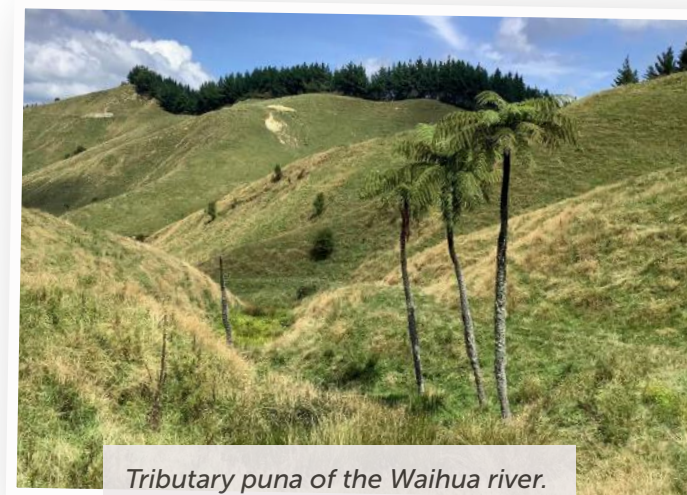
*It gives me hope that the little bit that I / we am /are doing can come to fruition if i / we persevere. This hiikoi rejuvenated me!"*



Charlie Lambert, Kuki Green and ElMaadi Te Aho



Lucky Hawkins, Chrissy Hauraki, Elmaadi Te Aho, Clare Butler, Nikki Strugess, Paul Te Aho, Jono Neilson, Photo taken by Charlie Lambert.



Tributary puna of the Waihua river.

The hiikoi to the puna had an impact on all who visited. Protecting and repatriating the mauri of the whenua, of earth mother in memory of tupuna and for future generations is how we can be active kaitiaki.

We hope to have more hiikoi whenua in the future so more descendants can experience the whenua taurikura / precious lands of Ngāti Kurahikakawa.

Nā Clare Butler



## TAKUTAI MOANA: High Court Judgement

A summary of the judgement as it relates to Ngāti Pāhauwera Development Trust is below in italics.

### Customary Marine Title:

*Poututu Stream to Pōnui Stream out to 5km (excluding the mouth of the Mōhaka River) - Ngāti Pāhauwera CMT only*

*Pōnui Stream to Waikari River out to 5km - Ngāti Pāhauwera CMT shared with Ngāi Tahu ō Mōhaka Waikare*

*Waikari to Otumatai block no-one gets CMT because MTT (Maungaharuru Tangitū) agrees shared with Ngāti Pāhauwera but won't recognise Ngāi Tahu ō Mōhaka Waikare and it should be shared Ngāti Pāhauwera/ MTT/ Ngāi Tahu ō Mōhaka Waikare*

*Otumatai block to Aropaoanui MTT meet the test for CMT but don't get it because they won't share with Ngāti Pāhauwera and it should be shared Ngāti Pāhauwera/MTT.*

### Protected Customary Rights:

*Waihua River to Waikari River (excluding the mouth of the Mōhaka River) PCR to the collection and use of sand, stones, hāngi stones and gravel.*

*Waihua River to Waikari River PCR to the collection and use of driftwood and pumice.*

*200 metres south of the mouth of the Mōhaka River and north to the Waihua River and out to 50 metres - the collection and use of wai tapu for rongoā and other purposes*

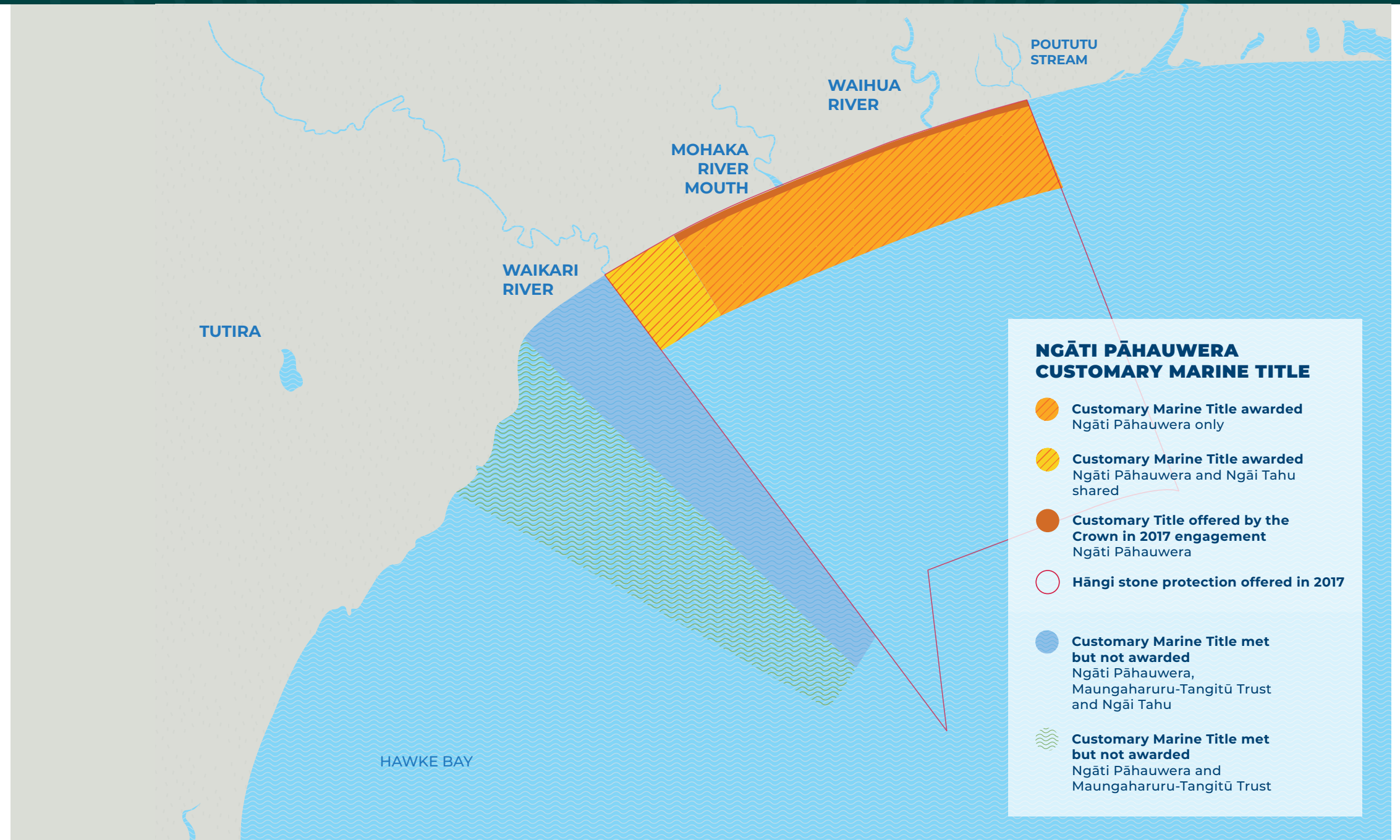
*Mōhaka and Waikari River mouths -*

*PCR over non-commercial whitebait fishing*

*Between Waikare and Poututu PCR to*

*manage, use, and protect their tauranga waka*

*Wāhi Tapu Protection – None*



### DID WE WIN?

The answer to that is not quite.

We received much more than through engagement, and we are going to the Appeal Court because again we don't agree with what has been offered.

*For our part, the High Court has recognised significantly more than the Crown offered in 2017, which is positive.*

In particular, the CMT award goes 5 km out to sea, rather than only the low-tide to high-tide mark. The Court has also awarded CMT from the Pōnui Stream to the Waikari River, which the Crown did not recognise in 2017. However this is not the full extent of the application and there are inconsistencies around what was given to other parties in the judges decision. A copy of the appeal document has been emailed to members, please contact us if you would like a copy. In the appeal we are saying that the Mōhaka River mouth should be included in CMT, that we should get out to 21km, and that Wahi

Tapu protection should be awarded.

There has been a request for a hui which we will organise when we have finalised analysis of the appeal content from the other parties. We will be offering this as part of a Hui A Iwi and will likely be a mix of zoom and in-person.

**If you have any queries, or would like copies of the judgement or appeal emailed to you please contact: Bonny Hatami 0274609366 or bonny.hatami@npdt.co.nz**



TAWHIRIRANGI TE MAUNGA TAPU  
MŌHAKA TE AWA  
TANGITŪ KI TE MOANA  
MAUNGAHARURU KI UTA  
KO NGĀTI PĀHAUWERA TE IWI

**NGĀTI PĀHAUWERA DEVELOPMENT GROUP CONTACT DETAILS:**

**Wairoa Office:** 74 Queen St, Wairoa 4108

**Napier Office:** Gardiner Knobloch House, 15 Shakespeare Rd, Napier 4140

**Email:** [admin@npdt.co.nz](mailto:admin@npdt.co.nz) **Phone:** 06 838 6869

**Facebook:** Ngāti Pāhauwera Development Trust

**[www.ngatipahauwera.co.nz](http://www.ngatipahauwera.co.nz)**

**NGĀTI**  
**PĀHAUWERA**  
Development Group

