

TE PUTORINO O PĀHAUWERA



Ngāti Pāhauwera Development Group Newsletter

September 2023 | Edition 18



KŌRERO *from the CEO*

Tēnā tātou katoa i raro i ngā manaakitanga a te runga rawa. Me mihi anō ki ngā tini mate kua wehe atu moe atu rā i te ao wairua.

Firstly, a tribute to trustees and staff for their ongoing commitment to support the many trust and community activities. Te Oranganui o Ngāti Pāhauwera remains at the forefront of business.

KEI ROTO

Waihua Marae
Health Clinic

Temporary Housing

Hail netting at Pakuratahi

Forest Lifeforce
Restoration Trust

Te Pūranga Symposium

If covid wasn't bad enough, Cyclone Gabrielle added another layer of turmoil to all communities, with some devastated. The resilience of whānau and hāpori was certainly tested but we look to the rebuild and learnings from that event. Being prepared and having good communication is so important going forward.

NPDT have continued to support whānau and communities through the social and hauora contracts as well as specific kaupapa like the temporary accommodation. Initially not on

the work plan, this became a priority following the NPDT trustees strategic planning session in Gisborne. The result reinforces the importance of whakapapa, whanaungatanga with strategic alliances and members in key areas. We acknowledge our Tairāwhiti whanaunga for the ongoing impact of the weather along with all those suffering.

The promise of good things should be at the heart of the rebuild and we look forward to the summer in the hope we don't have a drought situation following the floods and rain.

WAIHUA MARAE HEALTH CLINIC

A health clinic was held at Waihua Marae on Wednesday 10 May 2023.

It was a successful day with Queen Street Practice's Marion Terry, Audrey Hall, and Lynette Paki. We had whānau from Waihua and Mōhaka come for a general health check, and flu vaccinations. We will endeavour to have monthly health checks to meet the needs of whānau in Pāhauwera, whether services relate to diabetes, vaccinations, māmā and pēpī, being hapū etc.

Give me a call - to discuss what can be arranged for the next health clinic. Wifi is needed.

Cilla Albert at 027 206 3999



Rosco Taurima having general health check



Marlene Te Kahika



Tēnā koutou katoa,

I am delighted to announce that the budget service received funding from New Zealand Bankers Association (NZBA) in partnership with Building Financial Capabilities to deliver financial literacy programs to our community. With this support, we are able to empower individuals with the knowledge and skills necessary to make informed financial decisions.

Our financial literacy programs aim to equip whānau with essential tools and resources to manage their personal finances effectively. Through a series of engaging workshops, we will cover topics such as setting financial goals, budgeting, managing income, spending wisely, managing debt, saving and investing, creating wealth, and protecting assets.

We are committed to making a positive impact on the lives of our whānau by helping them develop a strong foundation in financial literacy. By improving the understanding of personal finance, we hope to empower our whānau to achieve their financial goals and build a secure future.

We express our sincere gratitude to the funding organisations for their generous support. Their investment in our programs will enable us to make a meaningful difference in our community. We also extend our thanks to all the individuals who have contributed their time, expertise, and resources to make these programs possible. Your dedication and commitment are invaluable in helping us achieve our mission.

With that in mind we had our first community financial wellbeing program at Raupunga Marae. This program was a joint venture with Diane Moyle from ASB. The feedback was positive

and from that program we agreed to do our Navigation to Home Ownership program in Wairoa and Ahuriri. We would like to extend our heartfelt thank you to all the attendees of our Financial Wellbeing program and Navigation to Home Ownership program. Your participation and enthusiasm made these a great success. We would also like to acknowledge our esteemed speakers Diana Moyle and Mahana Nikora from the ASB Community Connectors and Geemas Buxton from the Finance Team. Thank you, ladies, for sharing your expertise and insights with us. Your contributions were invaluable in making these programs informative and engaging. I would like to express my gratitude to Ina and our whānau at Te Huki Marae, and to Shaquille, Michelle, El Maadi and Waihua Marae who all generously supported these programs. Your services helped provide a high-service catering for our attendees. We would like to recognize our dedicated volunteers who worked tirelessly behind the scenes to ensure that everything ran smoothly. Their hard work and commitment were essential in making these programs a reality. Finally, we would like to thank everyone else who contributed to these programs' success in any way. Your support and encouragement were greatly appreciated.

Nō reira, tēnā koutou, tēnā koutou, tēnā koutou katoa.

We would like to express sincere gratitude to Sageilanois and Misty for the free suicide awareness and prevention workshop that they conducted for our organisation. The workshop was informative, engaging, and provided us with valuable insights into the profound impact of suicide on Hawke's Bay communities. The training approach was specific to the needs of workplaces and communities within Hawke's Bay, a long-term, sustainable, no barriers suicide awareness and prevention training approach. We would like to encourage other organisations to take advantage of

this free workshop. The workshop is delivered at no cost to the employer or organisation by Mates4Life. Thank you once again for your valuable contribution to our community.

MSD organised a Pōwhiri Poutama workshop training at Waipatu Marae. This was facilitated by Don Hutana and Annette Harris. The workshop was incredibly insightful, providing us with valuable knowledge and skills. Their expertise, passion, and dedication were evident throughout the training, making it an engaging and impactful experience. The content covered during the session was inspiring, equipping us with a deeper understanding of the importance of cultural practices in our community and workplace. Their invaluable contribution and commitment to fostering cultural understanding and connection is commendable.

The NPDT budget service has five trained energy mate coaches. We offer workshops and a free energy coaching service that provides communities with advice on how to affordably heat homes, use appliances efficiently and keep homes warm and dry over winter. This service is delivered by the Electricity Retailers Association of New Zealand.

We attended a collaboration hui organised by Diana at ASB. This hui was to network with Government and NGO organisations, an effective way to achieve greater impact than any organisation could generate on its own. Collaborating with local community organisations helps identify potential, crucial gaps in service delivery based upon continuity and community recovery priorities.

Tania Huata





Miriama Gemmell

Kia ora e te whānau!
Ko Miriama Gemmell tōku ingoa.
Nō Raupunga ahau.

I lived in Raupunga, then Wairoa until I was seven, then moved to the big smoke of Ahuriri. I went to Napier Girls' and the University of Auckland where I completed my BA in Māori Studies. I was a secondary English school teacher for most of the last 20 years, and I'm a poet in my spare time. My hoa rangatira is Richard Searle from Raetihi and Raumati Beach. We have two tamariki: James Rewi (9) and Hana Tirohia (7). We have just moved back to Ahuriri to be closer to the home fires.

I am the new project manager for Education / Mātauranga here at the NPDT. Over the next six months or so, I'll be working with the Ministry of Education and our kura to deliver better outcomes for our tamariki and rangatahi, and to revitalise the 2015 Education Strategy for our post-Covid, post-Cyclone Gabrielle whānau. Watch this space!

In the meantime, here are three kaupapa we'd love you to check out:

1. Be in to win \$100 New World voucher

What histories from your whānau, marae, hapū, and from Ngāti Pāhauwera, do you think our tamariki mokopuna should be learning about at school?

Fill out the surveys and go in the draw to **win a \$100 New World voucher!**

Survey 1:

<https://forms.gle/zq2C4bhbmnKHDvtA6>

How can NPDT help whānau to achieve educational success?

Survey 2 - About education in general:

<https://forms.gle/oesdx72mwvPeuFrD6>

2. Pāhauwera Profiles

Do you know about the awesome mahi that some of our whanaunga have been up to? Check out the first batch of Pāhauwera Profiles on the NPDT website today:

<https://ngatipahauwera.co.nz/pahauwera-profiles/>

And if you know someone who should be profiled, get in touch!

3. Share your kōrero

Do you have an ancestor or whānau member who has done some amazing or interesting things? Would you like to share that story with our Pāhauwera tamariki?

Your kōrero might be:

- a short story or a long story
- a story with a photo or no photo
- a story of being at home or out in the world
- ancient history or recent history

As part of improving all of our mātauranga and Pāhauweratanga (let alone whanaungatanga in this digital world!), we're collecting whānau stories. You get to choose how widely your kōrero is shared, if at all.

Either way, we'd love to hear from you!
Flick Miriama a message on
miriama.gemmell@npdt.co.nz

TEMPORARY HOUSING

As a response to the severe weather effects of Cyclone Gabrielle, NPDT in partnership with Toitu Tairāwhiti Building Ltd (TTBL) secured a contract to provide 30 temporary cabins for whānau impacted by the severe weather.

The cabins are funded by the Ministry of Housing and Urban Development (MHUD) and TTBL who supply the cabins. The cabins are temporary accommodation for those affected by the severe weather event and are part of a package to improve the housing situation in the Mohaka/Raupunga area. While many whānau throughout the region were affected by flooded rivers and burst stop banks, the cabins being provided in Raupunga/Mohaka are not from river flooding but rather the severity of the weather on their homes. On that basis, those whānau with high need were considered for the supply of temporary accommodation until such time as a longer housing solution can be provided. A list was prepared by the trustees of NPDT and then an assessment was developed by Cilla Albert (NPDT Hauora Navigator). Cilla, Peter MacGregor and the CEO reviewed the need against the MHUD criteria and have allocated based on that need and criteria.

The MHUD criteria is:

- the temporary accommodation will be provided for persons displaced and/or directly impacted by recent severe weather events.
- the proposed housing solution has the required consents from local councils.
- the proposed sites are suitable for the placement of temporary accommodation, i.e., the property is not in an area that has been designated a Category 3 status by the council.
- there is authority from the rightful landowner to place temporary accommodation on the selected site.

19 pods/cabins have as of this date been delivered and placed on whānau properties, accommodating 57 members of our whānau. It is planned to prepare 4 additional sites and set up 7 pods to host an additional 28 whānau members.





PIHANUI STATION

The cyclone prevented the planting of Pihanui station, but the licensee still managed to get a good cover by spot spraying and planting in a condensed planting period. The remaining pinus and native-only regions will be restarted and finished in May or July of 2024.

In order to manage and keep grass cover at a manageable level and restrict fire risk in one location, we have sold all stock and capital stock and retained 240 Rawhiti cattle on Pihanui. This area will be planted the next season.

MOHAKA FOREST TRAPPING
SEASON 2023/24.

Trapping of the forest for this season has been delayed by cyclone damage in the forest: loss of roads, tracks, fallen debris, slips and loss of road

culverts. Discussions are underway to allow pest control to commence though at a restricted level until the access and safety issues are resolved across the whole of the forest.

The pest management contractor Lewis Pest Control use only leg hold traps and fixed control bait stations.

NPDT will not allow the aerial drop of 1080 in the forest as result of our whānau whānui objecting strenuously in 2015/16 to its use.



NPDT Health Navigator set up

TE HIKOI

Ki te Whakapiki te Wairua, te Ngakau, te Ora! was the kaupapa for the country and town schools for this event held on Thursday 6 April 2023 at Tapuae Grounds and Lambton Square.

The face painting, barbeque, bouncy castles, and fun activities were a highlight for tamariki!

The Ngāti Pāhauwera Health Navigator was out doing promotion and networking. There were two winter give away packs up for grabs. Anika Crowiti and Zaelyn Te Paora were the lucky winners from Wairoa Primary. The kōrero was great with whānau and services. Some whānau were surprised to discover they were Ngāti Pāhauwera, or didn't realise a particular teacher was also a descendant. Wonderful day.



NPDT Flags on the day

STAYING UP
TO DATE

Kia ora koutou katoa,
Have you got a new phone number
or postal address?
Please update your membership
details with the Trust. This is particularly
important if you have a new address,
phone number, email address, if you
have moved or married recently, if you
have added to the whānau, or if you
have lost a loved one.
If you have not received AGM details,
Voting Packs, either you are not
registered, or we do not have your
correct contact details.
Please complete the registration form at
<https://ngatipahauwera.co.nz/rehitatanga/>
or email your new contact information
to admin@npdt.co.nz.
We appreciate your support in
this ongoing mahi.

NGATI PAHAUWERA DATABASE
MEMBERSHIP ROLL 2023

Valid Members 2023	6960
New registered members 2023	42
Deceased registered members 2023	8

BEREAVEMENT
NOTICE

*Moe mai e hika
ma i te ao wairua,
ma te Atua e
manaaki e tiaki.*

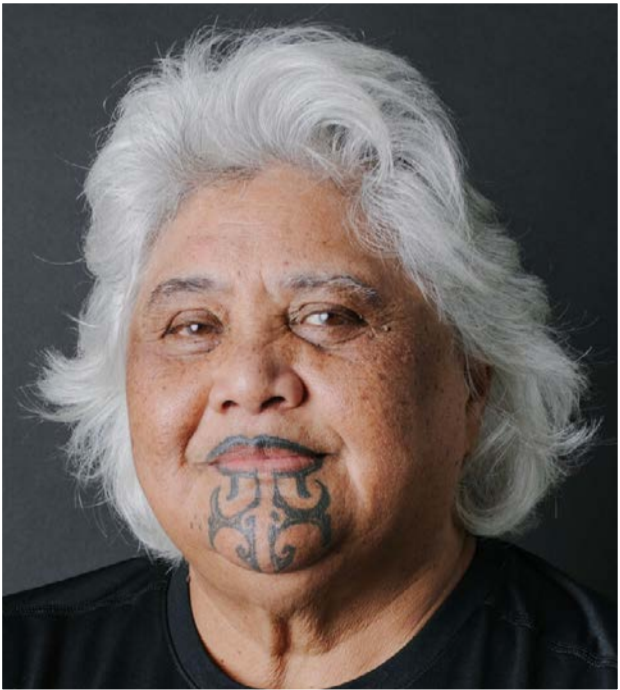
Elizabeth Te Whanaupani Biddle
Puti Hawkins
Fred Mc Roberts
Noel Stewart



CAROLINE HEREWINI MNZM

*Whakapunaki te maunga
Waiau te awa
Takitimu te waka
Whetumarama te marae
Ngāti Raukawa, Ngāti Kahungunu,
Ngāti Pahauwera, Ngāpuhi-nui-tonu,
Ngai Tūhoe ngā iwi
Ko Kararaina Herewini tēnei*

Caroline Herewini is the Kaiwhakahaere
(Chief Executive) of Te Whare Tiaki Wāhine
Refuge Charitable Trust.
She is a human rights and social justice advocate
committed to ending all forms of violence
against women and children in Aotearoa.
Caroline has worked tirelessly on this kaupapa
for more than 20 years and she has been the
driving force behind the birth and the ongoing
operation of Te Whare Tiaki whose point of
difference from non-indigenous refuge services
in Aotearoa lies in it being underpinned
by Te Tiriti o Waitangi (The Treaty of Waitangi)
principles of protection, participation
and partnership.
The principles of Te Tiriti set the foundation for
the work of Te Whare Tiaki and the obligations,
roles and responsibilities it has in regard to all
women, children, families, visitors and guests
in our land of Aotearoa.
Caroline has represented Women's Refuge
New Zealand at numerous national and
international events in Mexico, Washington DC,
New York, Canada and Australia where she has
incorporated the perspectives of indigenous
women into her presentations.
In the Pacific, Caroline has also been selected to
be part of the annual Pacific Watch New Zealand
delegations to the United Nations Convention



Status of Women from 2013-2019. She is also a
member of Breaking Silent Codes – a movement
of indigenous women trying to stop violence
against indigenous women across Aotearoa,
Australia and the Pacific Islands.
On the international front, she is a member
of The Every Woman, Everywhere Coalition
which works globally to advance a grassroots-
driven international treaty to end all forms of
violence. She is also a delegate and founding
member of International Network to End
Violence Against Women and Girls. This network
aims to build voice, create space and ensure
representation of women from particularly
developing countries and to use this to advocate
for the full eradication of all forms of gender-
based violence.

If you require a Māori woman's perspective,
particularly on matters of family violence
and women, at your wānanga, hui or
conference. Connect with Caroline at
caroline@tiaki.org.nz.

TE WHARE TIAKI RONGOMA TANE MEN'S CENTRE LAUNCH, PORIRUA

What an experience for Mana Wahine from Ngāti Pāhauwera ki te Tari Wairoa to be invited to this event held 12 May 2023 by Caroline Herewini, MNZM Kaiwhakahaere, Te Whare Tiaki Wahine Refuge, Porirua. We were fortunate to have time with Caroline to understand the purpose of the men's clinic and the launch. She called it the witching hour for men, of violence against their whānau that commenced in the evening until they leave for work.

We met Nick Barbara; he was full of passion and excited about the men's centre. Nick will be working alongside the men.

Small world: Nick was working in Gisborne Tauawhi Men's Centre. I would see him at the Police Family Violence hui in Wairoa, prior to his relocation to Porirua.

The launch was a success with CEOs, Associate Ministers, and whānau in need attending. They spoke of experiences and acknowledged Caroline for the mahi she does for the communities of Aotearoa/NZ. The launch was inspiring and mana enhancing. Mana wahine speakers advocated freedom from violence and freedom in general, which was powerful. Building relationships is essential and we were acknowledged for having to cross the river to get to the launch. The devastated area of the East Coast led the kōrero with many.

Cilla Albert



Top: Cilla Albert NPDT Health Navigator with Caroline Herewini, MNZM Kaiwhakahaere Te Whare Tiaki Wahine Refuge, El Maadi Te Aho, Michelle Thompson
Bottom: Team and Nick Barbara



HAIL NETTING TO PROTECT OUR APPLES AT PAKURATAHI

One single hail event can destroy an entire year of apple production in a matter of minutes. For Ngāti Pāhauwera, that could wipe out \$3 million of income for the Trust. Obviously, this is something we want to avoid and given we have experienced hail in the past, the decision was made to eliminate this risk by installing hail net.

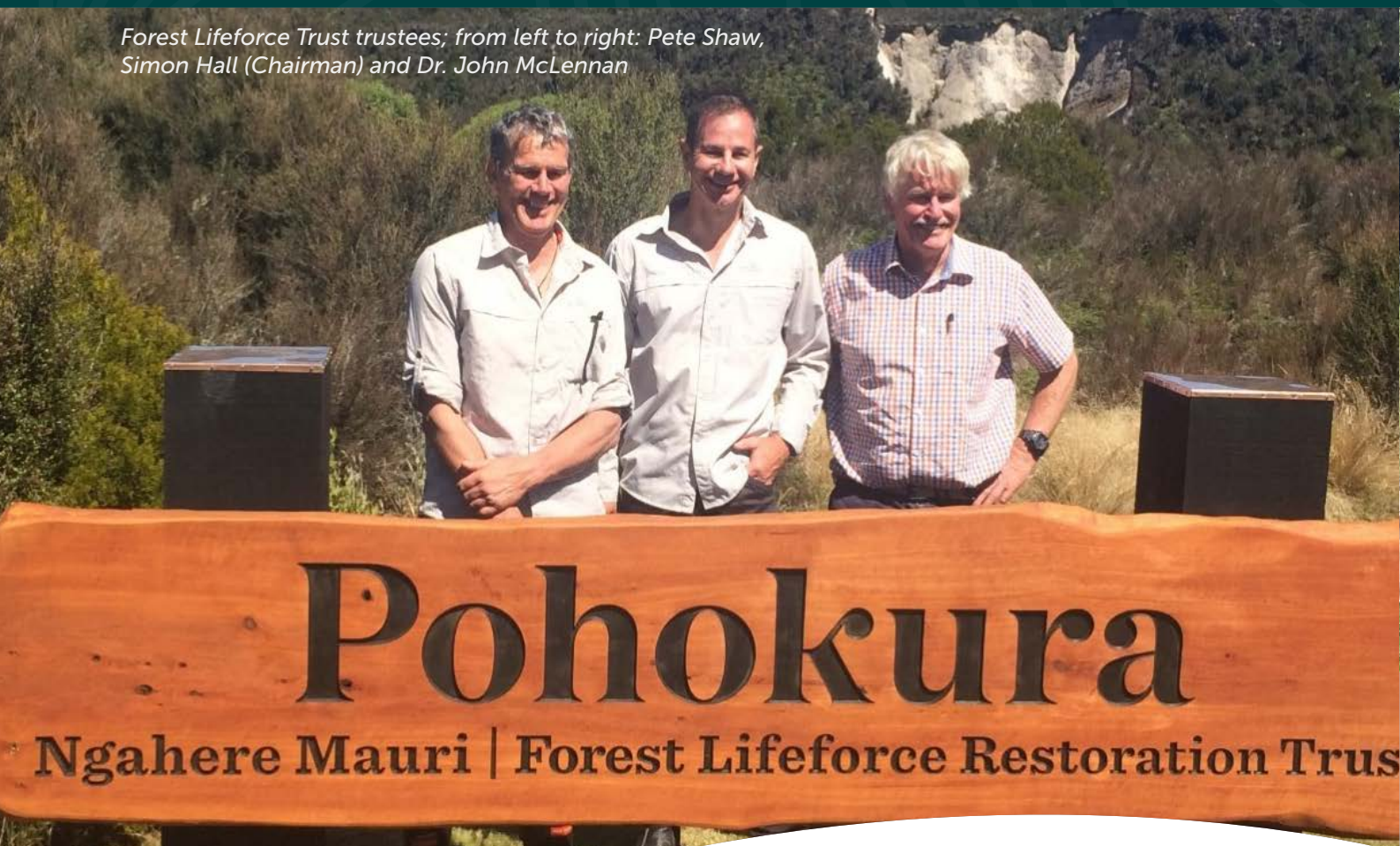
Hail net acts as a barrier and stops the hail hitting the crop. If there is a significant amount of hail, it falls to the centre and is shed between the rows. This prevents the structures collapsing under the weight of hail.

At the Pakuratahi Orchard we have nearly finished installing close to 30 hectares of netting. This has taken considerable effort over the last few months from a team of 15. The result is a very professional job that will afford years of protection. The team have also developed skills that could see Ngāti Pāhauwera contract these services for hail net installation in the future.



Hail netting to protect our apples at Pakuratahi Orchard

Forest Lifeforce Trust trustees; from left to right: Pete Shaw, Simon Hall (Chairman) and Dr. John McLennan



FOREST LIFEFORCE RESTORATION TRUST

In 1999 Simon Hall purchased Pohokura Forest (11,348 hectares). In 2005, he also purchased the 6120-hectare Maungataniwha Native Forest and later the bordering Maungataniwha Pine Forest (6,200-hectares). In 2006, the Forest Lifeforce Restoration Trust formed to provide direction and funding for:

“the restoration of threatened species of fauna and flora, to restore the ‘Ngahere Mauri’ in several native forests within the central North Island”

Maungataniwha is well known for being the site where Palaeontologist Joan Wiffen discovered the first NZ land-dinosaur fossils. Both properties are biodiversity hotspots containing whio, North Island brown kiwi, kārearea, toutouwai, titipounamu, miromiro, kākā, kākārīki, long-tailed bats, Dactylanthus or wood rose, scarlet, red and yellow mistletoe, Pittosporum turneri, and ngutu-kākā.

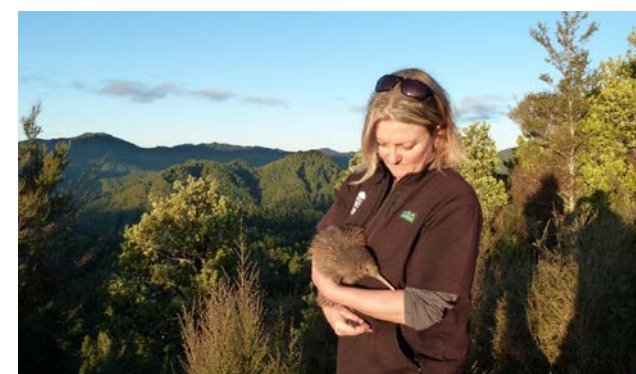
Maungataniwha and Pohokura blocks have received aerial 1080 operations every three to four years for the last 15 years. The ground-based trapping programmes that focused on core areas of 650-ha at Maungataniwha and Pohokura have expanded recently through Jobs for Nature Funding to protect an additional area of 9,000 ha, providing a trapping buffer in Maungataniwha Pines to protect the Maungataniwha Native Forest.



From left to right; Gaye Hawkins, Theresa Thornton, Walker Gilbert, Danny Pohipi, Kuki Green, Peeti Delamere, Ryan Adams, Pete Shaw, Hirere Ngamoki, Simon Anderson, Tamsin Ward-Smith, Ora Barlow, and Sheryl Collins.

In 2006, in partnership with Cape Sanctuary, work began at Maungataniwha to locate and fit transmitters to paired male kiwi. Using Operation Nest Egg, for the first few years, half of the offspring of these males became founders for the Cape Sanctuary Kiwi Kōhanga while others returned to the forest as 1kg juveniles to boost the population at Maungataniwha.

Operation Nest Egg or ONE, is the process where eggs are uplifted from wild kiwi nests and incubated and hatched at captive facilities. The chicks are reared in safety either at wild creche sites or in captivity, to around 1kg, when they can be returned to the forest. In the wild, almost all kiwi chicks die before reaching adult size mainly due to predation by stoats.



The ONE process enables juvenile kiwi to return to the forest once they are big enough to protect themselves from stoats.

Sixteen years on and after boosting the population by 260 young kiwi, the Maungataniwha population has more than doubled from an estimated 70 pairs in 2006 to over 140 pairs in 2023.

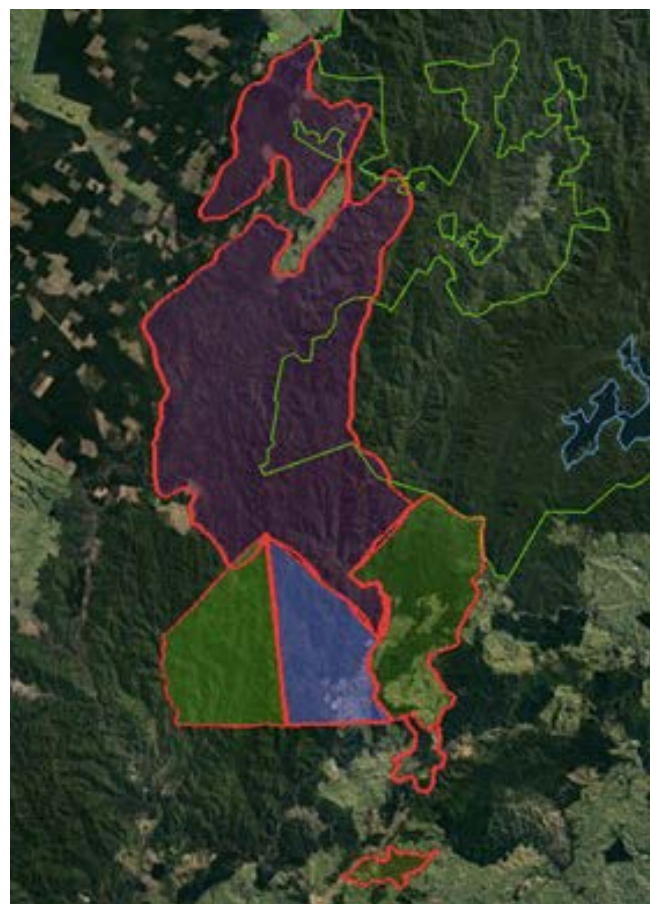
For the last five years, young kiwi sourced as eggs from Maungataniwha have been released to Pohokura where kiwi numbers were low. Over 230 kiwi have now been released at Pohokura surpassing the initial target of 200.

On May 28th, 2022, the trust celebrated the release of the 500th kiwi to be produced from Maungataniwha at Pohokura Forest.

2021/22 was a bumper kiwi season, with 91 young kiwi juveniles released to Maungataniwha, Pohokura or into the captive population. 2022/23 has also been a good year for kiwi breeding with a further 80+ juveniles being returned to the wild.

To test how effective an intensive trapping programme overlaid with aerial 1080 control is for protecting kiwi, 18 kiwi were monitored with radio-transmitters post-release at Pohokura. 100% survived for between 3 months and three years before the transmitters were removed or dropped off. Some kiwi stuck close to where they were released while others dispersed in all directions into the wider protected areas of the Whirinaki/Te Pua-A-Tane, and Waipunga Conservation Forests.

In May 2023, the Maungataniwha team and Ngāti Pāhauwera hosted Te Whānau ā Apanui, kaimahi from the Raukūmara Pae Maunga project, and



a representative from Ngātapa, Tom Blampied, at Maungataniwha.

The team of Raukūmara Pae Maunga is at the beginning of their journey to return kiwi to the Houpo block, on the western side of the Raukūmara.

Houpo received aerial 1080 in May 2023 and this is rolling on to cover the entire Raukūmara Forest, some 120,000-hectares in total, over the next few months. On top of this, the Houpo Trust is installing a 1200-hectare core area mustelid trapping network.

One or two kiwi pairs and single birds have been identified in Houpo from acoustic recorder placement which is encouraging. However, the population is so sparse that the Raukūmara team are considering options for restoring kiwi to the area to ensure that the population is genetically robust. Sourcing young birds from other nearby areas, such as from Maungataniwha, is one option.

Maungataniwha is the closest, healthiest population that is a suitable source for establishing kiwi in the Raukūmara. Ngāti Pāhauwera and the Forest Liferforce Trust indicated their support of the tono from Te Whānau ā Apanui/Houpo Trust for kiwi. A wānanga is planned to occur at Maraenui and the Maungataniwha team and Ngāti Pāhauwera will be invited to attend.

As well as a chance for all to meet, it is also an opportunity to lay to rest kiwi that have died during ONE over the years, and eggshells from kiwi that have hatched successfully.



TE PUTORINO O PĀHAUWERA PANUI

Kia ora koutou katoa,

What would you like to read about in this bi-monthly pānui?

What is happening in your community?

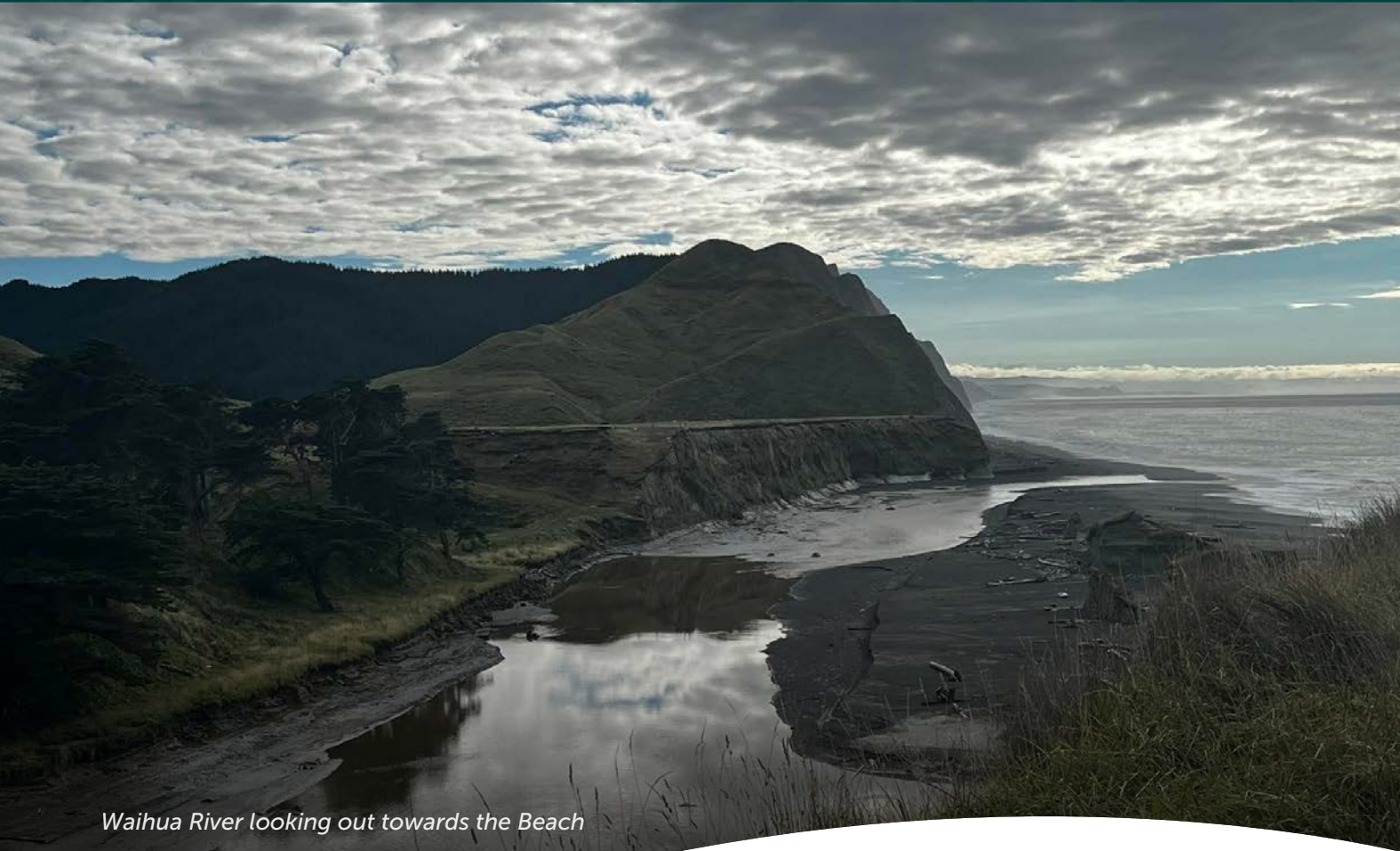
We would you love to share the good things that are happening in our hāpori, with our marae, schools, within your whānau. Maybe Koro or Nan have celebrated a milestone? All we need is a bit of a blurb about what you're up to, and a photo or two.

We'd love to hear from you, so get in touch!

El Maadi

elmaadi.teaho@npdt.co.nz
06 8386869





Waihua River looking out towards the Beach

The Forest Lifeforce Trust administers 23,000 hectares of contiguous forest of approximately 100,000 hectares including Ngātapa Station and Te Pua-a-Tane Whirinaki Conservation Forest.

TAKUTAI MOANA AND MOHAKA RIVER

For Takutai Moana, all of our evidence has been presented and we have a preliminary judgment but there are appeals against the judgment. It is taking a very long time and it is very slow progress. At the moment, there is a lot of administration around the different proceedings, so we are disappointed that there is not much to update you on. We are not just waiting around for the Court to make decisions, however. We are working in several different ways to assert

tino rangatiratanga, for example, through our Tangata Whenua project team for the Mōhaka me Waihua freshwater plan, applying on behalf of the Mōhaka River to the Waitangi Tribunal and through the Iwi Chairs Forum.

WAITANGI TRIBUNAL CLAIM ABOUT THE TAKUTAI MOANA ACT

Ngāti Pāhauwera maintain that the Takutai Moana Act is flawed. We submitted evidence about this to the Waitangi Tribunal as part of a national claim in 2019. A report was released



Mohaka River looking down towards the Bridge

in 2020 on the Wai 2660 claim. Marine and Coastal Area (Takutai Moana) Act Inquiry Stage 1 Report (justice.govt.nz). We are still awaiting the second report of the Tribunal. Our lawyers are preparing some notes on how the claimants in that inquiry might progress changes once the report is released, based on their experience in Health Stage One which led to the establishment of the Māori Health Authority. Stage Two of the Marine and Coastal Area (Takutai Moana) Act 2011 Inquiry will inquire into whether the broader statutory and policy issues relating to the Act itself breach Treaty principles and prejudice Māori.

MŌHAKA RIVER APPLICATION

An application for the Māori Land Court to cover legal fees through Special Aid for a river ownership case has been filed. We are now awaiting a decision from the Māori Land Court as to whether Special Aid is granted. This case will only proceed if the Court grants Special Aid. If so, we have invited the other Iwi attached to the Mohaka to join us.

Connie Buchanan wrote a great article about the continued fight for acknowledgment of our rights around the Mōhaka River. Click here to read: 'We are weeping for our river' - E-Tangata

MŌHAKA ME WAIHUA FRESHWATER PLAN

Work has been going on in the background despite the Cyclone and road closure impacts. We met online with the associated iwi and marae in late August to update them on our progress and next steps. The Cyclone especially has been an added complication to this mahi because HBRC has been heavily focused on Cyclone Recovery. Additional to this, the 'Kotahi Plan' is a looking at a wider picture than freshwater and includes Air, Urban Development, Natural Hazards and Risks, Coastal Environment and more. (Read for full details here - The Kotahi Plan | Hawke's Bay Regional Council (hbrc.govt.nz)). While we acknowledge that everything is connected, our focus is still our waterways which are threatened. They are the indicator and when we get things right for our waterways, we will be benefitting the whenua and people.

If you have any specific questions about the different proceedings, or would like links to the judgments or any other information please contact

Bonny Hatami
(bonny.hatami@npdt.co.nz)

TAIAO UPDATE

Over the past few months our taiao staff have been working on Cyclone Recovery and are now getting back into business-as-usual taiao work. The Jobs for Nature team has been busy removing weeds and planting native trees around Mōhaka and Raupunga.

The Te Mana o Te Wai team have been busy in wānanga, learning about water monitoring to prepare for our own monitoring around Waihua, Mōhaka and Waikari this summer.

Staff gave a presentation at the Kahungunu Fish Hook Summit, which is an annual meeting where people across Kahungunu gather to discuss what is happening in the takiwā with a particular focus on fisheries and the environment. It was great to come together with our Kahungunu whanaunga and share ideas and experiences that are locally relevant to the Kahungunu rohe.



Weed control at Te Huki Marae



Water monitoring learning

NPDT recently established a Taiao Committee to provide advice on taiao work happening across the rohe and to ensure NPDT business operations are best practice and environmentally responsible. The committee has met twice and has been a great way to ensure that the work of the NPDT taiao staff is consistent with the priorities and whakaaro from our members.

Gravel extraction is another kaupapa that keeps the team busy, and we have also been out conducting site visits and working with Hawkes Bay Regional Council to ensure that any gravel extractions that are granted don't have a negative effect on the awa.

If you are keen to know more or want to get involved, please contact:

Kathryn Gale
e. kathryn.gale@npdt.co.nz



Speech and whakawhanaungatanga at Kahungunu Fish Hook Summit





The kaupapa of Te Pūranga was to introduce kaimahi from iwi across the motu to the Te Ara Taonga culture and heritage agencies, the mahi we do and the ways we can support them with their mahi.

The kaimahi who attended work across all forms of collections and taonga – built heritage, wāhi tapu, objects, archives and taonga tuku iho. To ensure all participants benefitted from their week, it was important for the inter-agency collaboration to meet the varied needs of the attendees and touch on aspects across all types of collection care and management. El Maadi Te Aho and Miriama Gemmell were able to attend from NPDT.

Te Ara Taonga culture and heritage agencies are – Manatū Taonga Ministry for Culture and

Heritage, Archives New Zealand, National Library of New Zealand, Te Papa, Heritage New Zealand Pouhere Taonga, Ngā Taonga Sound & Vision. Te Ara Taonga is the framework which informs how the culture and heritage agencies work with and support iwi to meet their aspirations. The symposium was supported by the Mātauranga Māori Te Awe Kōtuku programme administered by Manatū Taonga – Ministry for Culture and Heritage.

TŪHONOHONO

Whakawhānaungatanga was at the heart of Te Pūranga with the hope that participants would form relationships that will become a rōpū tautoko connected with the kaimahi from each of the heritage organisations.

The week was richer for the openness and engagement of Te Pūranga participants – who shared their own experiences, questioned



institutional practices and committed to discussion, even long after the day sessions had ended, continuing the kōrero over kai in the evenings at their accommodation.

MĀTARANGA WHAKAAKORANGA

The week-long programme included discussion and practical elements of digitisation, archival practices, an overview of oral history and training, the Library's Ngā Tanga Reo Books in Māori project, and a back of house tour of collections at Te Papa. Kaimahi also had the opportunity to speed date with Te Ara Taonga mātanga and DIA Community Advisors to find out what funding is available and to discuss their projects that might be eligible for funding.

A highlight was a visit to Matangireia, led by Ellen Anderson, Kaiwhakahaere Tautiaki Taonga and Kaupapa, Pouhere Taonga. Matangireia, the former Māori Select Committee Room was opened in 1922 and has recently been conserved. The New Zealand Parliament worked with Heritage New Zealand and in consultation with tangata whenua to restore, enhance, and conserve the unique design elements of this room.

The National Library's Research Librarian Māori, Katrina Tamaira delivered practical sessions on archival practice from defining the kaupapa or purpose of the archive, through to practical exercises on doing an inventory – yes, spreadsheets are your friend!

AWHI MAI AWHI ATU

It was a pleasure to introduce kaimahi Māori to a range of experiences during the symposium. We enjoyed sharing our processes and approaches and hope the attendees can apply, adapt and use what they learnt in their workplaces. We also learned a lot by listening to the experience of our participants and discussing our collective challenges.



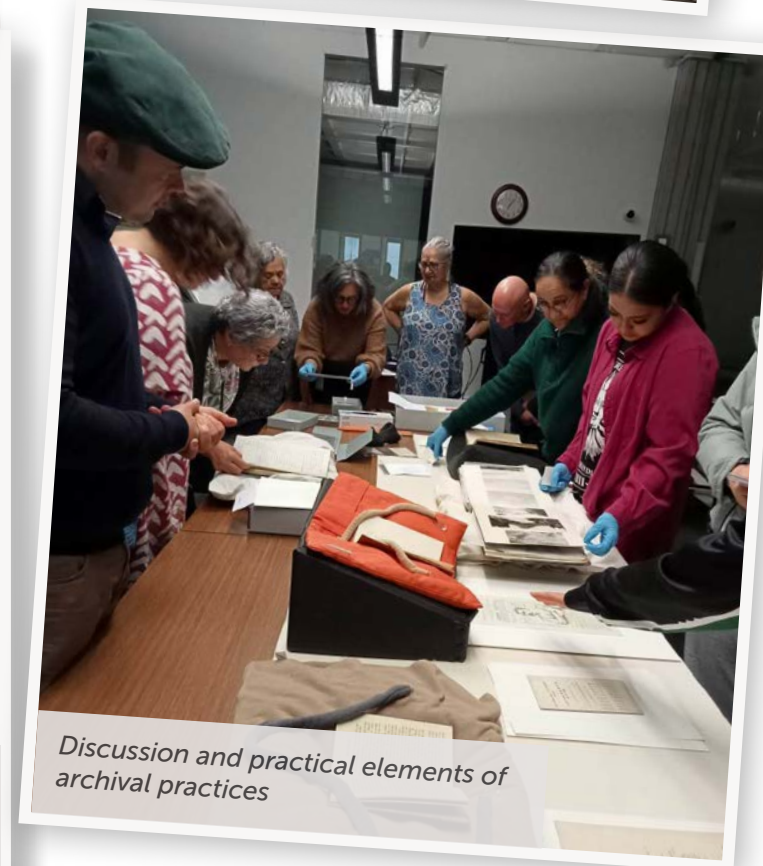
Vicki-Anne Heikell (Te Whānau-a-Apanui) is Field Conservator in the Outreach Services Team of the Alexander Turnbull Library, Peter Waihape, Hinemaia Dewes



Clare Butler – Nga Tonga Reo Books in Maori



Katrina Tamaira – Library's Research Librarian, Miriama Gemmell – Ngati Pahauwera, Adam Taylor – Nga Uri o Hau



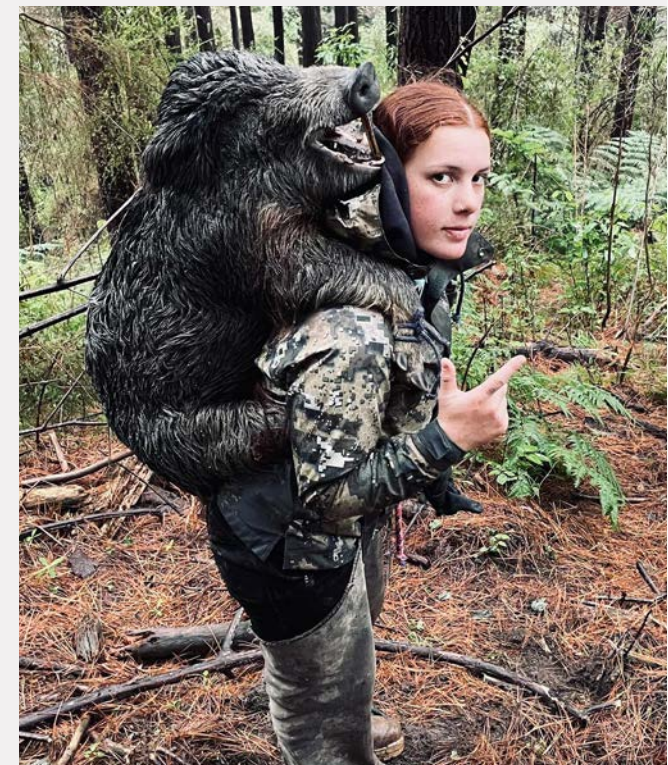
Discussion and practical elements of archival practices

NGATI PAHAUWERA
HUNTING CLUB 2023 SEASON

Due to Cyclone Gabrielle, there were certain limits placed on the opening of the hunting season this year. All hunting has been done on foot ONLY this season due to the damage in the forest. As a result, fewer permits are being issued throughout this hunting season.

As a result of the Waikare bridge being washed away after the cyclone and State Highway 2 being closed, the club opted to ring in for permits this year. Because of this, our Hawkes Bay members were unable to hunt until the Bailey bridge was completed halfway through the season.

This year we have had 71 active hunters being issued permits when they were requested. There have also been many cultural permits applied for throughout the year.



The Ngāti Pāhauwera Hunting Club is holding a Tamariki/Mokopuna hunting competition this Labour Weekend.



YMP RUGBY RANGATAHI SPORT

Ruff Riders under 10

After a successful Rugby season in Wairoa Jab, YMP Rangatahi Rugby were still eager to carry on playing sport. We entered two teams: Under 8s and Under 10s, in the Hawkes Bay league season held at the Hastings sports park over eight Saturdays. It was a lot of commitment to ask from the parents, but luckily for us our club are all whānau who all whakapapa to Pāhauwera.

Our first game played was on the 26th of August, Under 10s (Ruff Riders) played Pirate Pumas and Under 8s (Boar runners) played Tamatea Arikiniui, both YMP teams coming away with wins. Currently still undefeated 3 wins from 3 so far in the season. Tamariki are really making their presence felt - even catching the eye of the Kahungunu league rep selectors who've been really impressed, even commenting where the heck have these

Raupunga kids been hiding, amazed by the skill and talent coming from such a small place.

Still lots of work to do at training, do the mahi get the treats.

We'd just like to acknowledge our coaching staff/management all the Pāhauwera whānau behind the scenes for making this league season possible.

Also, our sponsors for their koha: Pāhauwera Maanaki Trust, Pāhauwera Shearing, Raw Meat Providers, and Paroa Trust.

Ngā mihi nui ki a koutou katoa

Willz Culshaw



Boar Runners under 8

TAWHIRIRANGI TE MAUNGA TAPU
MŌHAKA TE AWA
TANGITŪ KI TE MOANA
MAUNGAHARURU KI UTA
KO NGĀTI PĀHAUWERA TE IWI

NGĀTI PĀHAUWERA DEVELOPMENT GROUP CONTACT DETAILS:

Wairoa Office: 74 Queen St, Wairoa 4108

Napier Office: Gardiner Knobloch House, 15 Shakespeare Rd, Napier 4140

Email: admin@npdt.co.nz **Phone:** 06 838 6869

Facebook: Ngāti Pāhauwera Development Trust

www.ngatipahauwera.co.nz

NGĀTI
PĀHAUWERA
Development Group

