

# TE PŪTŌRINO O PĀHAUWERA

NGĀTI   
PĀHAUWERA  
Development Group

Ngāti Pāhauwera Development Group Newsletter



## *Christmas Edition*

"Kia tau te rangimārie o te  
Kirihimete, kia whiti te rā o te  
raumati ki runga i a tātou katoa.

May the peace of Christmas and  
the warmth of summer be with  
us all."

## KEI ROTO

Ngāti Pāhauwera AGM :  
Waipapa-a-Iwi Marae | 13  
December 2025

He Taonga Māuri for Rangatahi  
Leadership

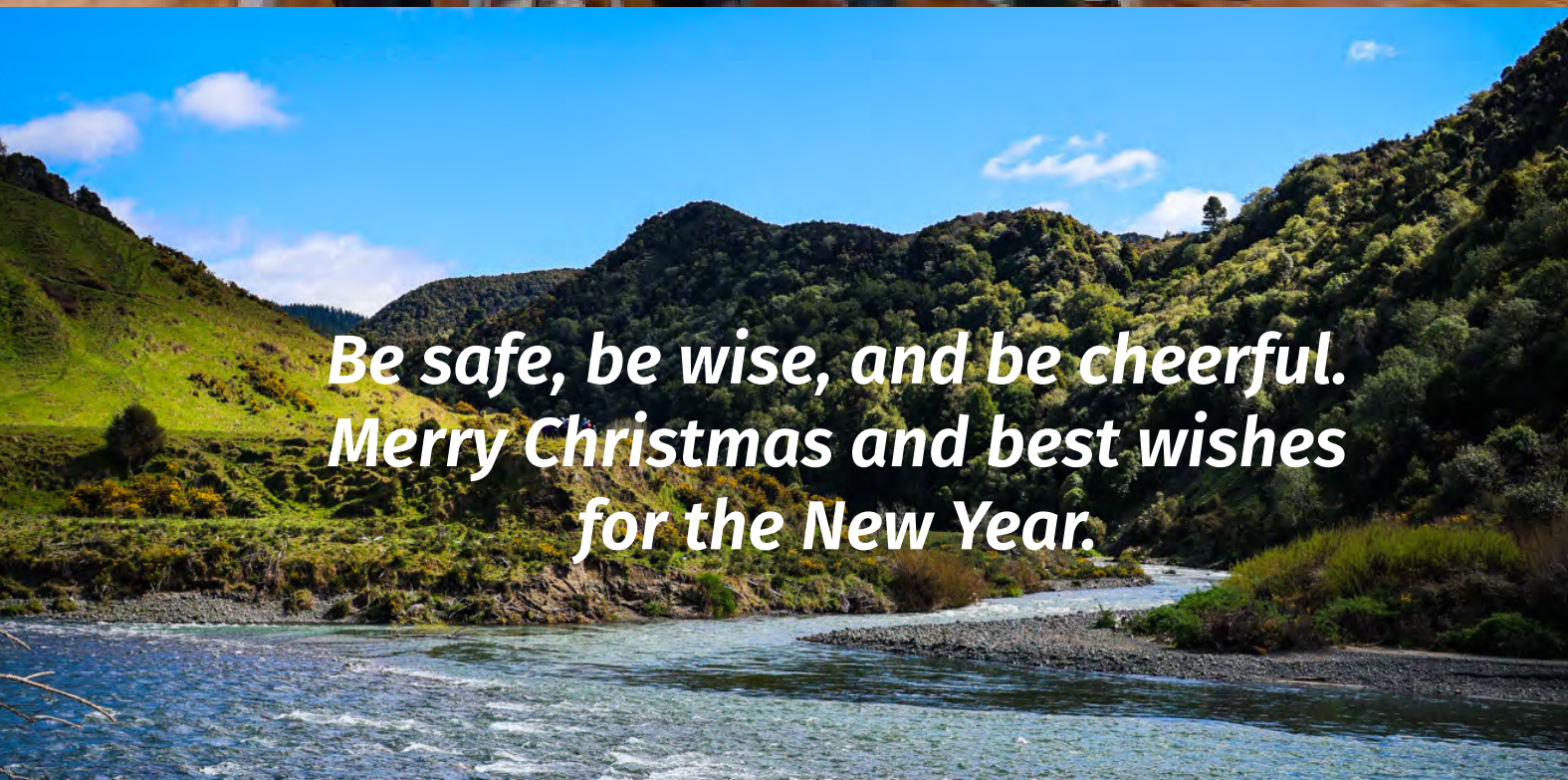
Acknowledgment of Barb's  
contribution

Lewis Pest Control: An overview of  
the history of pest control in the  
Mohaka Forest





Members attending the AGM on 15.12.25.



**Be safe, be wise, and be cheerful.  
Merry Christmas and best wishes  
for the New Year.**



Hayley Maxwell with her support team visiting the electorate, including Willie Te Aho, who played a key role in providing home support following Cyclone Gabrielle.

## KŌRERO *from the CEO*

Tena koutou katoa I raro I nga manaakitanga a te wahi ngaro me te waa tata o te Karaiti.

He whakaaro nui ki nga mate huhua o te rohe, o te tau ano hoki, Rere tonu te wai o te puna Roimata mo ratou, moe mai I te ao wairua.

We acknowledge with deep respect the many losses experienced across our rohe and throughout the year. Our tears continue to flow for those who have passed on. May they rest in peace in the spiritual realm and may comfort and aroha surround their whānau during this Christmas period.

We extend our sincere thanks and appreciation to everyone involved with the Ngāti Pāhauwera Development Trust, and to all who continue to support the Trust and its activities as we bring 2025 to a close and look ahead to 2026.

Your ongoing support, commitment, and belief in our kaupapa are deeply valued. Our AGM, held at Waipapa-a-Iwi Marae, was warmly received with good attendance, despite several other AGMs taking place at the same time across the East Coast, including Paroa, Tatau Tatau o te Wairoa, and Te Rūnanga o Ngāti Porou.

As our NPDT AGM is scheduled at the beginning of the calendar year, overlaps can sometimes occur. However, members are still able to access all key information.

The Annual Report, including the financial statements for the year ended 30 June 2025, is available on our website at

<https://ngatipahauwera.co.nz/>.

If you have any questions, please contact us at [admin@npdt.co.nz](mailto:admin@npdt.co.nz). Videos from both the accountant and the auditor are also available to view.



Each year we aim to improve the timing and delivery of our AGM. While opportunities to connect and spend time together over kai were limited this year, we recognise that for some members a brief visit to receive an update before moving on to other kaupapa was sufficient. In 2026, we plan to make changes that allow more time for whakawhanaungatanga and connection.

As we look toward 2026, we remain hopeful for improved economic conditions and continued resilience among whānau who have faced hardship and the challenges of the economic and political climate of 2024 and 2025.

Following the AGM, we were pleased to host Hayley Maxwell, the Māori Party candidate for the Ikaroa-Rāwhiti Māori electorate. Hayley and her team were travelling throughout the electorate, meeting with communities and discussing political issues. The Trust welcomes all candidates to come, engage in kōrero, and connect with our people. Equally important is encouraging Māori to enrol and vote. While your vote is your own, as Māori we must remain active in the political space, particularly given the current direction and actions of the coalition government. Minority voices are influencing legislative change, and it is vital that we are part of the conversation to promote and protect our indigenous rights. Kia kaha whānau—please ensure you are enrolled and that you vote. As 2026 approaches, we wish everyone a restful and safe holiday period spent with whānau. May you take time to recharge, reflect, and return ready to face the challenges of the new year.



## KŌRERO from the Chairman

### Mahia ngā mahi o Kahukura

Ensuring that we are doing the right things, in the right way, to meet the needs of our whānau remains foremost in the minds of the Trustees of the Ngāti Pāhauwera Development Group. One thing that will not change is the global demand for food. As Ngāti Pāhauwera, we are well positioned to play a meaningful role in this space through the whenua owned by our whānau and the Development Trust.

Unlocking this potential will require us to overcome several challenges. The first is ensuring appropriate governance is in place across our undeveloped lands. The second is growing whānau capability and capacity to support new agribusiness opportunities and improve our competitive strength.

It is more important than ever that we use our whanaungatanga to work alongside the wider Wairoa community and Council. Successful land development and the sale of produce require scale to meet market demand, as well as coordinated investment in supportive infrastructure. Working collectively across hapū, iwi, and the wider rohe will be critical to achieving sustainable outcomes for all.

The Trustees will continue to progress this kaupapa. Our land development hui held at Kahungunu Marae confirmed there is strong interest from whānau in better utilisation of our whenua, and we are committed to maintaining momentum in this space.

Another important pathway for lifting whānau income is entrepreneurship, whether through side hustles or full-time business ventures. Building confidence, skills, and networks is essential to supporting whānau to take these steps.



Throughout the year, the Trust has supported and participated in a range of significant kaupapa and events. These include the Māui Ventures Summit, exploring Māori business start-ups; growing tourism opportunities within Ngāti Pāhauwera; hosting the Hikurangi Māori Business Symposium in Nūhaka; and the Wairoa Māori Business Symposium, which provided an important platform for local enterprise, collaboration, and innovation.

We also supported TREC infrastructure mahi contributing to the rebuild of our State Highway network, so vital for keeping our whānau connected.

Building on this momentum, we will be holding a Ngāti Pāhauwera two-day Business Symposium in March 2026, focused on growing whānau capability and capacity, strengthening enterprise pathways, and supporting sustainable economic development across our rohe.

We were proud to support and attend cultural celebrations such as the Māori Music Awards in Hastings, Toitū te Reo events celebrating our language and culture, and the Wairoa Kapa Haka Festival. I also acknowledge the importance of supporting our own whānau initiatives, including kaupapa such as the Te Pū Oranga Whenua Symposium held in Rotorua.

None of this mahi would be possible without the dedication of our staff. On behalf of the Trustees, I extend our sincere thanks to the entire NPDT team for their commitment and professionalism. I acknowledge our Chief Executive, Robin, whose leadership, steadiness, and tireless mahi continue to guide the organisation through both opportunity and challenge.

While national politics and legislative change can at times be distracting, we are fortunate to be supported through collective iwi leadership, including the Iwi Chairs Forum, which provides shared knowledge and technical support. Remaining focused on our own kaupapa, our whenua, and our people will always yield greater gains than being consumed by external noise.

Lastly, as a final note to those that have contributed so much from Maoridom and recognising the sacrifice of our war veterans a memorial hui will be held in Wellington on the 23 February 2026 in Wellington.

The hui celebrates those soldiers from D Company that returned from World War II as part of the overall battalion. The hui will start with karakia at the Wellington wharf followed by a celebration at Takapuwahia marae. For more detail contact me.

Ngā mihi nui to our Trustees, staff, whānau, and partners for your continued support. Together, we remain committed to building a strong, resilient, and prosperous future for Ngāti Pāhauwera.

**Kia mau ki te maro o te kawau.  
Nāku iti nei**



Bonny Hatami - Te Pū Oranga Whenua Symposium



Our NPDT Governance and Leadership. 2025 AGM held at Waipapa-a-Iwi Marae, Mohaka.



## AGM – Waipapa-a-Iwi Marae | 13 December

The Ngāti Pāhauwera AGM, held on 13 December at Waipapa-a-Iwi Marae, was a well-attended and uplifting gathering that brought our whānau together to reflect on the 2024–2025 year and to look ahead to the future.

The meeting highlighted both the celebrations and the challenges we face as an iwi and as whānau, particularly within the current political and economic climate.

These realities were acknowledged openly and honestly, alongside the literal challenges our whenua and communities continue to experience. Despite this, the kaupapa of the hui remained grounded in optimism, unity, and collective strength.

Discussions throughout the AGM reflected shared hopes and aspirations for the future, especially around the ongoing development and stewardship of our whenua.



Kayla and Jaz  
distributing the  
AGM Goodie bags

There was a strong sense of commitment to ensuring that decisions made today continue to benefit current and future generations of Ngāti Pāhauwera.

Discussions throughout the AGM reflected shared hopes and aspirations for the future, especially around the ongoing development and stewardship of our whenua. There was a strong sense of commitment to ensuring that decisions made today continue to benefit current and future generations of Ngāti Pāhauwera.

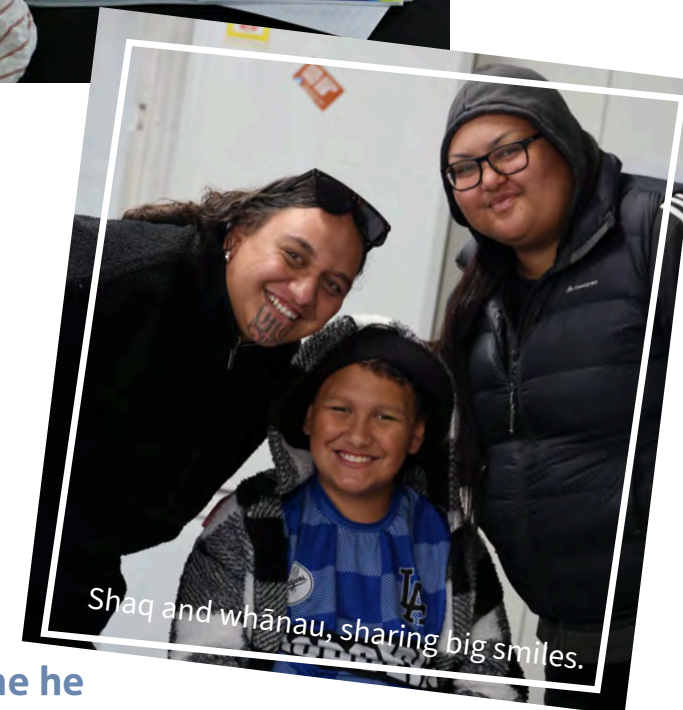
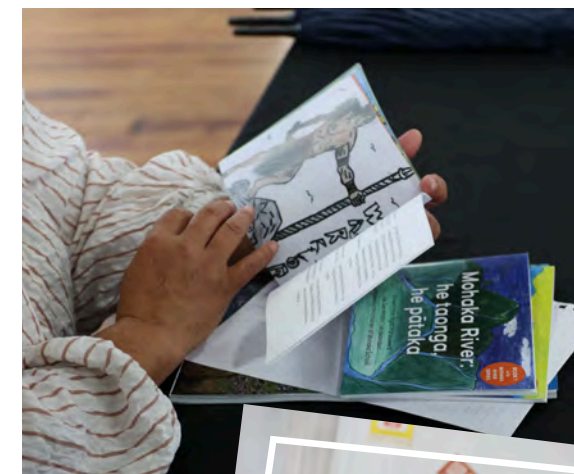
We were especially blessed to receive a Christmas carol from Henare O'Keefe, which added warmth and reflection to the hui as we approached the festive season. The distribution of the tamariki pukapuka was another special highlight, celebrating and nurturing our youngest generation and reinforcing the importance of knowledge, identity, and connection.

It was heartening to see whānau gathered, sharing kōrero, whakaaro, and kai, strengthening the bonds that hold us together as Ngāti Pāhauwera.

Here are a few photos capturing the whānau in attendance and moments from the day.

Ngā mihi nui to all who attended, contributed, and continue to support the kaupapa of Ngāti Pāhauwera. Together, we move forward with unity, purpose, and hope.

**"Me he manu rere, ka tau ki te whenua; me he tangata haere, ka hoki ki ōna ūkaipō."  
Like a bird in flight that returns to land, so too do our people return to their foundations.**



Shaq and whānau, sharing big smiles.



AGM in full swing, December 2025.





Image montage provided by Shaedyn & whānau.

## He Taonga Māuri for Rangatahi Leadership

Earlier this year, Ngāti Pāhauwera had the privilege of gifting a mauri stone to Hastings Boys' High School, presented through one of our rangatahi, Shaedyn.

What began as a request to support his kura led to a deeper kōrero about Shaedyn's journey and achievements.

Shaedyn is a Cultural Prefect with Honours, Kaitaka Tāne for both Manu Huia and the Hastings Boys' High School Kapa Haka rōpū, and a performer at Te Haaro o Te Kāhu regionals and Matatini 2025 with Te Rerenga Kōtuku. His aspirations are to study te reo Māori and taiao at Waikato University and, in time, return to teach at his kura.

After hearing this kōrero, Matua Kuki Green expressed his pride in seeing a rangatahi of such potential representing Ngāti Pāhauwera. A taonga was gifted — a mauri stone — symbolising life force, responsibility, and connection to whenua and whakapapa. This taonga was formally handed over to the kura and its Māori unit on behalf of Shaedyn and Ngāti Pāhauwera.

The gifting of this mauri stone affirms our commitment to uplifting rangatahi who carry our values and tikanga into the future. It also strengthens the relationship between Ngāti Pāhauwera and Hastings Boys' High School, grounded in mutual respect and shared responsibility for nurturing young Māori leaders.

Ngāti Pāhauwera is proud to support rangatahi like Shaedyn, whose leadership and service reflect the strength and future of our iwi.

## Acknowledgment of Barb's Contribution



It is with sadness that we announce Barb will be leaving the Ngāti Pāhauwera Development Trust. Barb has been an invaluable member of our team for the past 18 months, contributing significantly to the delivery of financial mentoring and supporting whānau across our rohe.

Her professionalism, dedication, and unwavering commitment have strengthened our kaupapa and enhanced outcomes for the communities we serve.

Barb brought empathy, expertise, and a solutions-focused approach that empowered countless whānau to navigate financial challenges and build resilience.

Her ability to connect with our people, offer guidance, and create a safe space for whānau has left an enduring mark on our service.

## Christmas Cheer Parcels

One of Barb's quiet but impactful achievements was the strength of the relationships she built across the community. In particular, her close working relationship with Helen at Napier City Council led to a meaningful act of generosity in the lead-up to Christmas, with support secured for six whānau in Ahuriri.



Photo left: Barb & Abby standing next to the Christmas Cheer parcels ready for distribution and a recipient.

At a time of year that can place significant financial pressure on families, this support brought both practical relief and genuine joy, underscoring the difference that trusted relationships and community collaboration can make. Napier City Council's contribution reflects a shared commitment to manaakitanga and supporting whānau wellbeing, and their support is warmly acknowledged and appreciated.





## Lewis Pest Control: An overview of the history of Pest Control in the Mohaka Forest.

The presence of possums and bovine tuberculosis (TB) was evident throughout the **Mohaka Forest** and neighbouring properties. In response, the responsible agency at the time, TBfree NZ, proposed the aerial application of 1080 across the forest and surrounding lands to control and eradicate possums and TB. Ngāti Pāhauwera whānau strongly opposed the use of aerial 1080.

Following a series of robust and at times heated hui in 2016, the Ngāti Pāhauwera Development Trust began engaging directly with TBfree NZ, supported by Jimmy Lewis, to find an alternative pathway forward.



This engagement resulted in a significant milestone: in 2017, the first-ever Memorandum of Understanding (MOU) between our iwi - Ngāti Pāhauwera and TBfree NZ was signed, for a term of eight years.

This agreement marked the beginning of a long, challenging, and innovative journey in possum and pest management within the Mohaka Forest.

Lewis Pest Control (LPC) commenced operations in November 2017.

Photo above: Whānau at Kakariki Farm in 2017, training and learning the tools of the trade.

### Operational Approach and Innovation

Initial pest control methods included the use of leg-hold traps, lures, and pre-feed bait stations. Over time, innovation became a defining feature of the programme.



Drawing on extensive field experience, Jimmy Lewis and the LPC team designed and built bespoke leg-hold traps, timed bait stations, and specialised traps capable of also catching rats and mustelids. These designs were developed in-house to suit the specific conditions of the Mohaka Forest.

This innovation later evolved into the use of controlled poison bait stations utilising “Double Tap”, specifically designed to maximise possum removal while also significantly reducing rat populations, which were classified as by-catch.

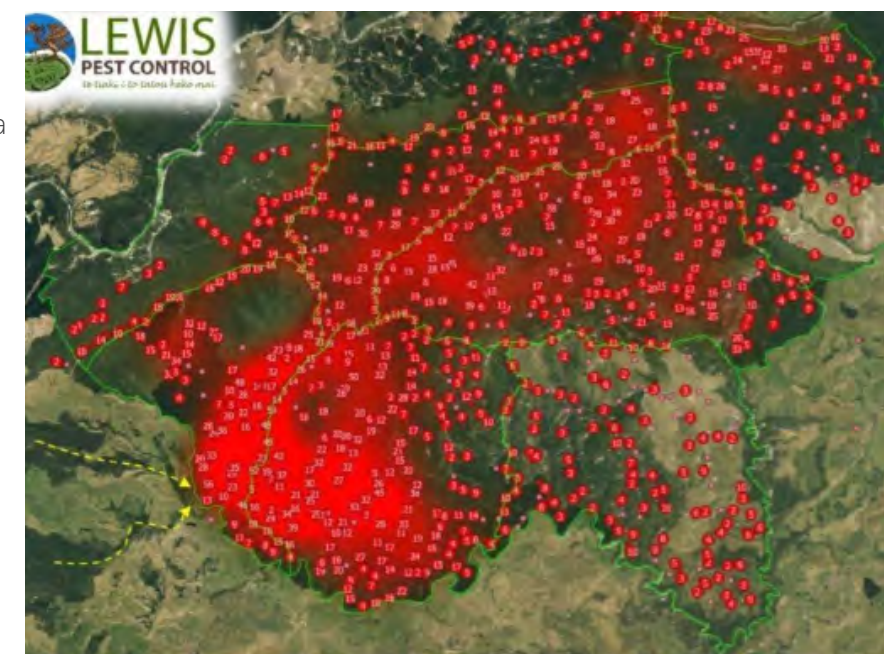
Photo right: LPC bespoke leghold trap being used in the forest to trap possums.



### Data Collection and Intelligence-Led Control

As part of their contract with Ngāti Pāhauwera and TBfree NZ, LPC was required to record the location of all traps and bait stations across each forest stratum, initially using GPS tracking.

LPC expanded this requirement into a comprehensive data system, recording not only possum and rat catch numbers, but also identifying movement patterns—referred to as “pest highways”. Heat mapping was introduced to visually track bait station locations, catch data, and reinvasion points.







Outcomes of Sustained Pest Control

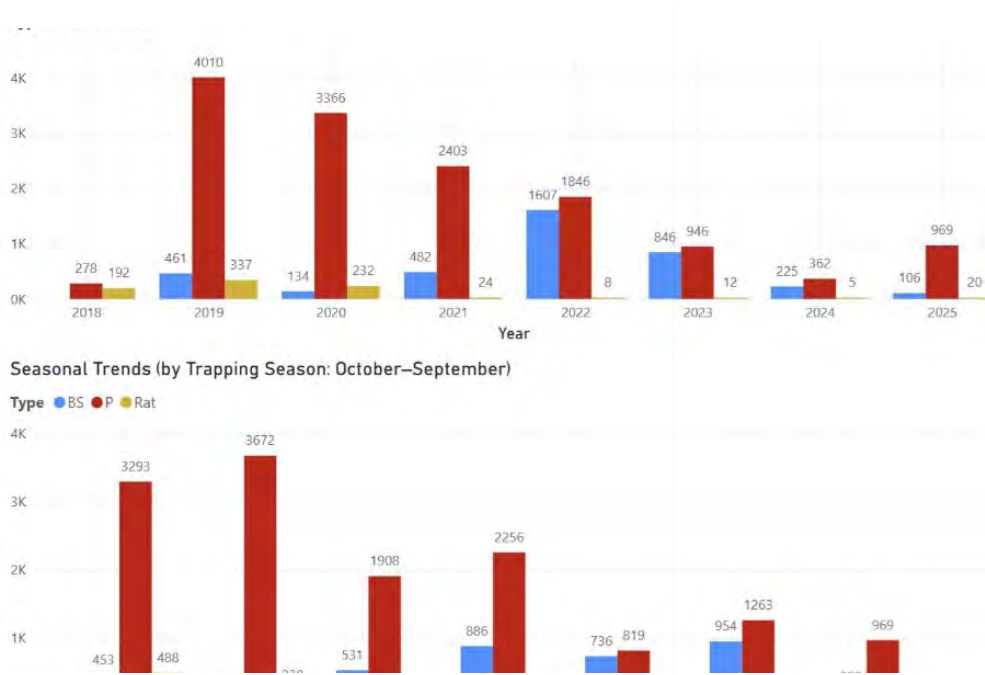
Data collected from 2018/19 through to 2024/25 shows the scale of impact:

**Possums removed: 14,179**  
**Rats removed: 4,666**

In the first year of operations (2017/18), 6,070 possums were removed (rats were not recorded that year).

Total possums removed from the Mohaka Forest to date: 20,249  
Based on an average possum weight of 1kg, this equates to 20.249 tonnes removed from the ecosystem.

Bar graph below indicates the annual and seasonal trends.



Looking Ahead

Ngāti Pāhauwera Development Trust has entered a new Memorandum of Understanding with TBfree NZ (now OSPRI) for a further three-year term from 2025. Lewis Pest Control will continue as the contracted provider, maintaining momentum toward possum eradication in the Mohaka Forest.

Taiao – Restoring the Forest

This sustained pest management programme has enabled the significant reduction of possums and rats, resulting in measurable biodiversity recovery within the forest.

For Ngāti Pāhauwera, the re-emergence of kiwi is a powerful indicator of forest health and a marker of hope for future generations. Native flora, including species such as ngutukaka, is regenerating, reinforcing the ecological gains achieved through this mahi.

Every step taken collectively strengthens us as an iwi and restores balance to our taiao for our mokopuna.

Building Capability

From 2017 to 2021, LPC partnered with EIT Tairāwhiti to deliver a pest control-specific training programme under the New Zealand Certificate in Primary Operations Skills (Level 3).

We are proud that the graduates emerged skilled, safety-focused, and ready to contribute to pest management operations.

From Pressure to Progress: The Lewis Pest Control Story

Lewis Pest Control is a family-owned business established by Jim Lewis in 2016. With over 32 years' experience in pest management and hunting across Aotearoa, Jim brings deep practical knowledge and a strong respect for the whenua.

His vision is clear:

**"Restoring and preserving our native bush and wildlife is our primary objective. We dream of a future where kiwi are commonplace in our forests."**

Innovation Built from Experience

Long before data-driven systems were introduced, Jim was innovating in his shed, designing leg-hold traps better suited to New Zealand conditions and deployable without damaging trees. These traps were mass-produced by the LPC team and became central to their field operations.

Resilience Through Setbacks

Cyclone Gabrielle (January 2023) caused major access and infrastructure damage, with some areas still inaccessible. Rising costs and reduced access in 2024–25 limited bait deployment to 30% of normal levels.

Despite this, the systems, data, and capability remain in place and ready to scale back up. This resilience reflects the strength of the partnership, the innovation applied, and the shared commitment to our whenua.

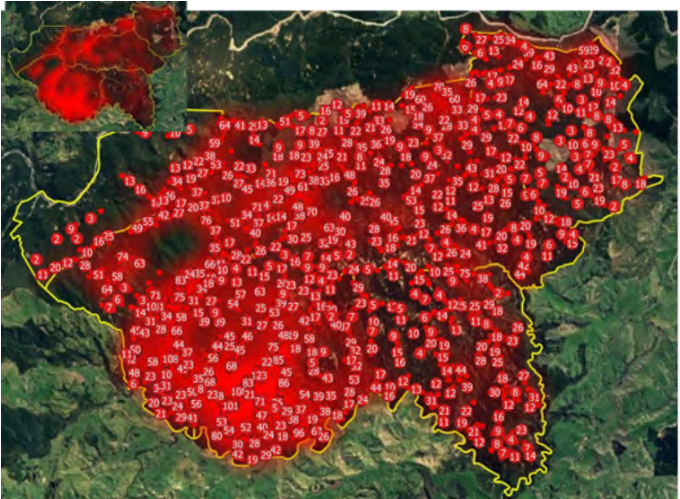
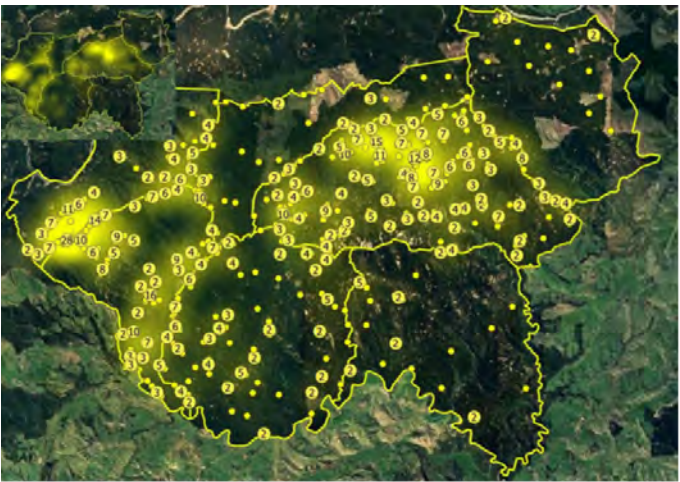
Results that Rival Aerial 1080

The introduction of Double Tap, alongside precise data tracking, led to dramatic reductions in rat populations:

- 2019–20: 51% reduction
- 2020–21: 78% reduction
- 2021–22: 88% reduction

**This represents a 98% reduction over four seasons. By combining innovation, data, and experience, LPC achieved cost-per-hectare outcomes comparable to aerial 1080—without dropping poison from the air.**

Heat maps below highlight the placement of, bait stations, and field operations - Yellow map is for Rats and red is for Possums.







## NPDT OFFICE CLOSING DATES

Kia ora e te whānau,

Please note our Trust office will close from:

**Friday, 19 December 2025, and  
will reopen on Monday,  
12 January 2026.**

We want to acknowledge our members and wider community for your continued support throughout the year.

Thank you for the mahi, the kōrero, and the collective commitment to strengthening our whānau and rohe.

From all of us at Ngāti Pāhauwera Development Trust, we wish you a safe and restful festive season—take care on the roads, and we hope you enjoy valuable time with whānau and friends.

Ngā manaakitanga

**Ngāti Pāhauwera Development Trust**

## TE PŪTŌRINO O PĀHAUWERA PANUI

Kia ora koutou katoa,

What would you like to read about in this bi-monthly pānui?

What is happening in your community?

We would love you to share the good things that are happening in our hāpori, with our marae, schools, within your whānau. Maybe Koro or Nan have celebrated a milestone? All we need is a bit of a blurb about what you're up to, and a photo or two.

We'd love to hear from you, so get in touch!

**El Maadi**

**elmaadi.teaho@npdt.co.nz**  
**06 8386869**



## STAYING UP TO DATE

Kia ora koutou katoa,

If you have moved house recently or changed your phone number or email address, please let us know. It is important we have accurate contact information for members for sending out pānui and voting packs.

If you did not receive AGM details for December 2025. You may not be registered or we do not have your correct contact information.

### HOW TO UPDATE:

Send your info to us at **admin@npdt.co.nz**. If you have not registered, you can find the registration form at:

**<https://NgātiPāhauwera.co.nz/rehitatanga/>**

Do you have whānau members who need to register? Send them the link above, or collect a registration form for them at one of our offices:

**74 Queen St, Wairoa, OR  
170a Waghorne St, Ahuriri.**

Maintaining accurate information is ongoing mahi - so we appreciate your help!





This past season has seen strong engagement from whānau, schools, and community groups.

Beyond adventure, our guides have embedded cultural learning and environmental stewardship, helping participants understand the significance of the Mohaka River as a taonga and a vital part of our whenua.

A highlight this year has been the support and growth of **Toitoi Manawa**, a rangatahi-led kaupapa spearheaded by our guide **Rebecca King**.

Through this programme, rangatahi gain hands-on experience in rafting, environmental restoration, and leadership, connecting deeply with our awa, whenua, and tikanga.

The programme has empowered young people to build confidence, leadership skills, and a strong sense of identity, while also contributing to the health and care of our river and surrounding environment. Coverage from the Wairoa Star celebrated the programme's impact, highlighting its importance in nurturing future leaders and strengthening local cultural knowledge.

Other **highlights from late 2025 include:**

- Expanded rafting bookings, welcoming local schools, whānau, and inter-regional visitors,
- Whānau adventure days, creating accessible and fun experiences for all ages,
- Environmental stewardship initiatives, including awa clean-ups and biodiversity projects,
- Tourism partnerships, opening pathways for rangatahi to explore careers in outdoor leadership and eco-tourism

Our Mohaka River, winding through our whenua, is more than a site for adventure; it is a living classroom and cultural corridor, teaching rangatahi and visitors about kaitiakitanga, resilience, and connection to te taiao.

Mohaka Rafting extends heartfelt thanks to all guides, whānau, sponsors, and supporters who have walked alongside us this season.

Together, we are creating experiences that strengthen our connection to the awa, empower our rangatahi, and celebrate the cultural and environmental treasures of our rohe.

## MOHAKA RAFTING ADVENTURE, WHĀNAU & RANGITAHİ LEADERSHIP



Rangitahi learning to make Reti boards

As 2025 draws to a close, Mohaka Rafting continues to grow as a hub for adventure, connection, and rangatahi development in our rohe.

Operated by Ngāti Pāhauwera interests, our rafting experiences on the Mohaka River range from gentle family floats to thrilling whitewater runs, offering participants a unique way to engage with the awa, culture, and whenua.

This past season has seen strong engagement from whānau, schools, and community groups.

Beyond adventure, our guides have embedded cultural learning and environmental stewardship, helping participants understand the significance of the Mohaka River as a taonga and a vital part of our whenua.



Rangitahi participating on Toitoi Manawa kaupapa, standing next to their awa.



## PAROA LANDS TRUST (MOHAKA C12)

Paroa Farm Trust held its AGM in Hastings on Saturday 13 December.

Ray Edwards (Paroa Chairman), Kathryn Gale (Trustee), Luke How (Accountant), and Andrew Kennett (Farm Manager) provided an overview of the Trust's activities and performance over the past year.

Their updates reflected the ongoing commitment to caring for and developing the whenua for the benefit of current and future generations.

As a koha back, the Trustees continue to invite shareholders and whānau who whakapapa to the whenua to a day at Splash Planet.

This annual gathering is always a valued opportunity to come together, reconnect with our whanaunga, and strengthen whānau ties.

To stay connected and keep up to date with Trust news and activities, shareholders are encouraged to follow the **'Paroa Farm Trust Mohaka' Facebook page** or visit the **website at [paroafarmtrust.co.nz](http://paroafarmtrust.co.nz)**.



## KAI SYSTEMS IN NGATI PAHAUWERA

Kai is central to who we are as Ngāti Pāhauwera, yet our communities face many challenges in accessing and sustaining healthy, culturally connected food systems. These challenges include:

- Environmental: Pollution, climate change, drought, cyclones, and extreme weather impact kai gathering, growing seasons, and harvests.
- Cultural: Loss of land, urban migration, and erosion of traditional knowledge affect our connection to whenua and kai.
- Economic: Limited infrastructure, high food costs, and food insecurity reduce access to healthy, affordable kai.
- Health: Increased reliance on processed food contributes to diet-related health issues in our communities.

Between 2020 and 2023, we engaged with whānau across our rohe to understand aspirations for their whenua. This mahi builds on previous research, including the Mohaka River Claim (1990s), Takutai Moana engagement (2012 onward), Aspirations of Māori landowners (2020), and Ngāti Pāhauwera & Climate Change (2021)—all of which highlighted the importance of kai and kai gathering.

Our current project looks closely at Kai systems within the Pāhauwera rohe, mapping food sources, identifying strengths and weaknesses, and capturing community aspirations for the future.

The aim is to revitalise and strengthen local food systems, promote sustainable agriculture, improve infrastructure, and ensure whānau have the resources and support needed to build a resilient, equitable, and culturally connected food system.

By centering whānau voices and traditional knowledge, this work supports Ngāti Pāhauwera to grow our kai, our culture, and our future together.

## ELECTRICITY RETAILER'S ASSOCIATION NZ (ERANZ)

We would like to express our deepest gratitude to Mercury, one of our valued ERANZ partners.

Their unwavering commitment to supporting whānau who might otherwise struggle to have power connected has been truly transformative.

Recently, Mercury stepped in to assist a single māmā navigating the challenging transition from employment to a benefit while managing significant health challenges.

Facing immense pressure to maintain her household, she received not only practical assistance but also a gesture of care that speaks volumes about Mercury's dedication to community wellbeing.

In another act of generosity, Mercury provided a brand-new fridge to a whānau member.



Mercury provided a brand-new fridge to a whānau member, an act that not only reduced energy costs but also alleviated financial stress. When the fridge couldn't fit through the front door, the delivery driver exemplified true manaakitanga, going above and beyond to ensure the whānau received what they needed delivering the fridge to her home.

Photo above: Geroge Ashby – Mercury Energy





COMMUNITY PARTNERSHIPS

INTERCOLL – DEBT MANAGERS

We extend our heartfelt thanks to Interroll – Debt Managers, and in particular Chris Fifita, while also acknowledging and remembering Mark Francis for his enduring legacy of generosity and compassion.

Photo above: Wananga sponsored by Interroll – DebtManagers

Photo below: Left Chris Fifita and right Mark Francis of Interroll - Debt Managers.



From the challenging days following Cyclone Gabrielle and the flooding in Wairoa, through to their recent \$5,000 contribution supporting kai vouchers for whānau in Wairoa—where no food bank exists—and across Ahuriri–Heretaunga, Interroll’s support has been both timely and transformative.

These contributions have had a profound impact on the wellbeing of whānau, providing dignity, relief, and practical support when it has been needed most. Further demonstrating their commitment,

Interroll’s sponsorship of a whānau wānanga reflects a genuine investment in empowering whānau, strengthening financial capability, and building long- term resilience within our communities.



This photo to the right, is with Reihana Turner, Ina, and Tania Huata was taken at the Wairoa Age Concern event.

A huge thank you to Reihana Turner, Fire and Emergency Service NZ, Pou Takawaenga Māori – Rāwhiti | Māori Liaison for East Coast, for all the incredible mahi you do to support our whānau and communities.

Your dedication and commitment make a real difference, ngā mihi nui!

These partnerships are more than transactions; they are relationships grounded in trust, care, and shared purpose. Together, we continue to create pathways for whānau to thrive, ensuring they have access to the guidance, resources, and aroha they deserve.

Barb’s departure will be felt deeply, not only by our service but by the many clients whose lives she has touched. While we are sad to see her go, we celebrate her contributions and the legacy she leaves behind.

NPDT ON HYUNDAI COUNTRY CALENDAR

We’re excited to share and celebrate featuring on Hyundai Country Calendar!

It was a great opportunity to showcase the incredible mahi happening on our whenua and to shine a light on the people who make it all happen.

The episode highlights our commitment to caring for our people, working safely and efficiently, and upholding our role as kaitiaki of the land.

A proud moment for our whānau and a chance to share our story with Aotearoa.

You can catch the episode on TVNZ 1 or watch it anytime on TVNZ+.







## TAIAO UPDATE

In late August, representatives of the Ngutukākā Recovery Group gathered at Waipapa-a-lwi Marae for a national symposium focused on the protection and restoration of ngutukākā (the native New Zealand mistletoe). The hui brought together plant specialists and practitioners from across the motu, creating an important space for knowledge-sharing grounded in tikanga and respect for mana whenua.

Holding the symposium at Waipapa-a-lwi was significant. It acknowledged the mana of the marae and the role of mana whenua as kaitiaki, reinforcing that the recovery of ngutukākā is not only a scientific endeavour, but one deeply connected to whakapapa, whenua, and mātauranga Māori.

The Recovery Group included leading botanists, ecologists, and restoration practitioners, among them Graham Atkins, who was acknowledged for dedicating his life's work to the restoration and protection of ngutukākā.



Whānau with the Ngutukākā recovery roopū.

As part of the symposium, a planting of ngutukākā was also carried out around Waipapa-a-lwi Marae. This mahi was a practical expression of kaitiakitanga, embedding the kaupapa of restoration within the whenua of the marae and strengthening the living connection between people, place, and plant.

Ngāti Pāhauwera whānau who are interested in supporting this kaupapa and being part of growing and restoring ngutukākā are encouraged to get in touch. There are opportunities to be involved in future planting, care, and learning as we work together to protect this taonga for generations to come.



Whānau planting Ngutukākā around our marae and surrounding areas.





# WĀHINE MĀORI SHAPING THE FUTURE WITH TE PŪ ORANGA WHENUA

Te Pū Oranga Whenua (TPOW) has been honoured to partner in the CSIRO 'Indigenous Women in Agriculture' project.

This kaupapa has seen members travel across Australia including Darwin, Adelaide, and Brisbane. To learn from First Nations practitioners, researchers, and allies.

Experiences have included yarning circles, Indigenous Women's gatherings, visits to Country, agricultural conferences, and site visits to First Nations-owned sustainable businesses.

TPOW is a nationwide network of wāhine leading in the whenua space, from trustees on iwi, marae, farms, and land blocks, to roles in community leadership, policy, traditional Māori healing, and rongoā. Several members of the network whakapapa to Ngāti Pāhauwera.

In late October, TPOW hosted a two-day symposium in Rotorua, bringing together wāhine from across Aotearoa to share knowledge, kōrero, and leadership experience.

Discussions over the two days covered Tino Rangatiratanga, te taiao, leadership, climate change, agriculture, agribusiness, research, and the integration of Indigenous knowledge into these spaces. At the heart of it all was the critical conversation around Constitutional Change—all viewed through the lens of Indigenous wāhine leadership.

Three speakers of note were:

- Frances Goulton (Ngāti Maniapoto, Ngāti Hine), leader of the Parāikete Whero movement.
- Hana Tapiata (Tūhourangi, Ngāti Tarāwhai), author of Atua Wāhine.
- Nicole Brown (Larrakia, Malak Malak, Yanyuwa nations), Indigenous leader and social activist

Their kōrero was powerful, honest, and deeply impactful, rooted in lived experience. A reminder that more Indigenous wāhine in leadership spaces can inspire change, share knowledge, and encourage rangatahi to take up space and speak with confidence.



Theresa Thornton (Ngāti Pāhauwera) presenting

Follow **Te Pū Oranga Whenua on Facebook** to view presentations from the symposium, which will be available soon.



Hana Tapiata presenting at TPOW.



## POWERING OUR MARAE - STRENGTHENING RESILIENCE THROUGH CLEAN ENERGY



The Ngāti Pāhauwera Development Trust has been successful in securing funding through the Māori Climate Platform fund, administered by the Ministry for the Environment, in partnership with our marae across the Pāhauwera rohe.

This kaupapa represents a significant step forward in Māori-led climate action that is grounded in our values, our people, and our responsibilities as kaitiaki.

This initiative is more than the installation of solar panels and batteries on our marae. It is about strengthening resilience, uplifting our whānau, and protecting the taonga and places that sit at the heart of our hapori life.

Our marae are places of refuge, connection, culture, and manaakitanga.



Ensuring they are energy-secure and able to operate during times of disruption is both a practical necessity and an expression of who we are as Ngāti Pāhauwera. This gathering was more than a mere assembly; it was a celebration of knowledge-sharing and empowerment. Our meticulously designed events offered invaluable insights into financial direction, encompassing debt management, interest-free financing options, energy conservation strategies, and pathways to fostering healthier living environments.

By harnessing Tama-nui-te-rā, this kaupapa supports a clean-energy future that aligns with tikanga Māori and affirms mana motuhake. Renewable energy will help reduce long-term operational costs, increase energy independence, and lessen reliance on fossil fuels, while enabling marae to continue providing shelter, warmth, kai, and essential services during power outages and extreme weather events.

The benefits of this mahi extend beyond immediate infrastructure upgrades. This kaupapa contributes to intergenerational wellbeing, ensuring that our marae, whānau, and mokopuna inherit facilities that are resilient, financially sustainable, and environmentally responsible. It also builds local capability by embedding knowledge, governance, and asset management practices that will support these systems for decades to come.

**He mahi nui tēnei mō te  
oranga tonutanga o ngā  
marae, o ngā whānau, me te  
iwi whānui.**



Ngāti Pāhauwera Development Trust acknowledges and thanks the Ministry for the Environment for the opportunity provided through the Māori Climate Platform fund, which recognises the vital role marae play as resilience hubs and supports iwi and hapū to lead climate solutions that are locally driven and culturally grounded.

In the New Year, the Trust will connect with each participating marae to initiate this kaupapa, working closely alongside marae committees to ensure delivery reflects local priorities, tikanga, and aspirations. This mahi will be progressed in partnership, guided by whanaungatanga, transparency, and shared responsibility.

Together, we look toward a future where our marae stand strong powered by clean energy, grounded in our values, and prepared to support our people through both challenge and prosperity.





TAWHIRIRANGI TE MAUNGA TAPU  
MŌHAKA TE AWA  
TANGITŪ KI TE MOANA  
MAUNGAHARURU KI UTA  
KO NGĀTI PĀHAUWERA TE IWI

**NGĀTI PĀHAUWERA DEVELOPMENT GROUP CONTACT DETAILS:**

**Wairoa Office:** 74 Queen St, Wairoa 4108

**Napier Office:** 170a Waghorne St, Ahuriri, Napier 4110

**Email:** [admin@npdt.co.nz](mailto:admin@npdt.co.nz) **Phone:** 06 838 6869

**Facebook:** Ngāti Pāhauwera Development Trust

**[www.NgātiPāhauwera.co.nz](http://www.NgātiPāhauwera.co.nz)**

**NGĀTI**  
**PĀHAUWERA**  
Development Group